

Anti-Phospho-ELK1-Thr417 antibody (350-430) (STJ90257)

STJ90257

GENERAL INFORMATION

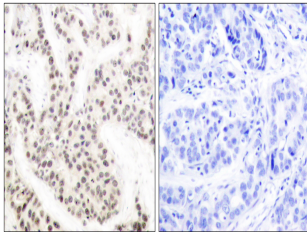
Product Type	Primary antibodies
Short Description	Rabbit polyclonal antibody anti-Phospho-Ets Domain-Containing Protein Elk-1-Thr417 (350-430) is suitable for use in Immunohistochemistry, Immunofluorescence, Immunoprecipitation and ELISA research applications.
Applications	IHC-P, IF-P, IP, ELISA
Host/Source	Rabbit
Reactivity	Human, Mouse, Rat

PRODUCT PROPERTIES

Clonality	Polyclonal
Clone ID	
Concentration	1 mg/mL
Conjugation	Unconjugated
Purification	The antibody was affinity-purified from rabbit anti-serum by affinity-chromatography.
Dilution	IHC 1:100-1:300
Range	IP 2-5 ug/mg ELISA 1:10000
Formulation	PBS, 50% Glycerol, 0.5% BSA and 0.02% Sodium Azide.
Isotype	IgG
Storage	Store at -20°C for up to 1 year from the date of receipt, and avoid repeat freeze-thaw cycles.
Instruction	

TARGET INFORMATION

Gene ID	2002
Gene Symbol	ELK1
Uniprot ID	ELK1_HUMAN
Immunogen	The antiserum was produced against synthesized peptide derived from human Elk1 around the phosphorylation site of Thr417 at amino acid range 379-428
Immunogen Region	350-430
Specificity	Phospho-ELK1-Thr417 polyclonal antibody (Ets Domain-Containing Protein Elk-1) binds to endogenous Ets Domain-Containing Protein Elk-1 at the amino acid region 350-430 only when phosphorylated at Thr417.
Immunogen Sequence	



Immunohistochemistry analysis of paraffin-embedded human breast carcinoma, using Elk1 (Phospho-Thr417) Antibody. The picture on the right is blocked with the phospho peptide.