

Anti-Phospho-EGFR-Tyr1172 antibody (1110-1190) (STJ90250)

STJ90250

GENERAL INFORMATION

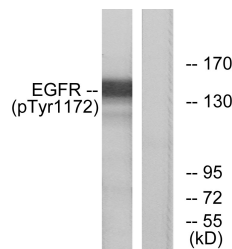
Product Type	Primary antibodies
Short Description	Rabbit polyclonal antibody anti-Phospho-Epidermal Growth Factor Receptor-Tyr1172 (1110-1190) is suitable for use in Western Blot and ELISA research applications.
Applications	WB, ELISA
Host/Source	Rabbit
Reactivity	Human, Mouse, Rat

PRODUCT PROPERTIES

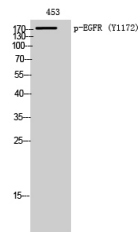
Clonality	Polyclonal
Clone ID	
Concentration	1 mg/mL
Conjugation	Unconjugated
Purification	The antibody was affinity-purified from rabbit anti-serum by affinity-chromatography.
Dilution	WB 1:500-1:2000
Range	ELISA 1:10000
Formulation	PBS, 50% Glycerol, 0.5% BSA and 0.02% Sodium Azide.
Isotype	IgG
Storage	Store at -20°C for up to 1 year from the date of receipt, and avoid repeat freeze-thaw cycles.
Instruction	

TARGET INFORMATION

Gene ID	1956
Gene Symbol	EGFR
Uniprot ID	EGFR_HUMAN
Immunogen	The antiserum was produced against synthesized peptide derived from human EGFR around the phosphorylation site of Tyr1172 at amino acid range 1139-1188
Immunogen Region	1110-1190
Specificity	Phospho-EGFR-Tyr1172 polyclonal antibody (Epidermal Growth Factor Receptor) binds to endogenous Epidermal Growth Factor Receptor at the amino acid region 1110-1190 only when phosphorylated at Tyr1172.
Immunogen Sequence	



Western blot analysis of lysates from A431 cells treated with EGF 40 μM 10', using EGFR (Phospho-Tyr1172) Antibody. The lane on the right is blocked with the phospho peptide.



Western blot analysis of 453 cells using Phospho-EGFR (Y1172) Polyclonal Antibody diluted at 1: 2000

This product is suitable for in-vitro studies under the RESEARCH USE ONLY [RUO] licence. This product must not be used as for diagnostic or other medical purposes.
 St John's Laboratory Ltd, Knowledge Dock Business Centre, University Way, London, E16 2RD | Tel: 0208 223 3081