

Anti-Phospho-CCND3-Thr283 antibody (220-300) (STJ90240)

STJ90240

GENERAL INFORMATION

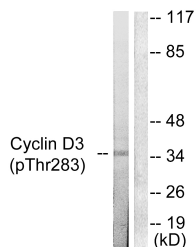
Product Type	Primary antibodies
Short Description	Rabbit polyclonal antibody anti-Phospho-G1/S-Specific Cyclin-D3-Thr283 (220-300) is suitable for use in Western Blot, Immunohistochemistry, Immunofluorescence and ELISA research applications.
Applications	WB, IHC-P, IF-P, ELISA
Host/Source	Rabbit
Reactivity	Human, Mouse, Rat

PRODUCT PROPERTIES

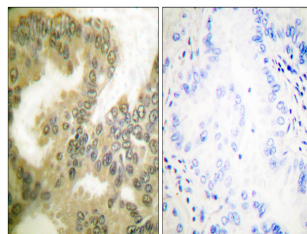
Clonality	Polyclonal
Clone ID	
Concentration	1 mg/mL
Conjugation	Unconjugated
Purification	The antibody was affinity-purified from rabbit anti-serum by affinity-chromatography.
Dilution Range	WB 1:500-1:2000 IHC 1:100-1:300 ELISA 1:5000
Formulation	PBS, 50% Glycerol, 0.5% BSA and 0.02% Sodium Azide.
Isotype	IgG
Storage Instruction	Store at -20°C for up to 1 year from the date of receipt, and avoid repeat freeze-thaw cycles.

TARGET INFORMATION

Gene ID	896
Gene Symbol	CCND3
Uniprot ID	CCND3_HUMAN
Immunogen	The antiserum was produced against synthesized peptide derived from human Cyclin D3 around the phosphorylation site of Thr283 at amino acid range 243-292
Immunogen Region	220-300
Specificity	Phospho-CCND3-Thr283 polyclonal antibody (G1/S-Specific Cyclin-D3) binds to endogenous G1/S-Specific Cyclin-D3 at the amino acid region 220-300 only when phosphorylated at Thr283.
Immunogen Sequence	



Western blot analysis of lysates from K562 cells treated with UV 5', using Cyclin D3 (Phospho-Thr283) Antibody. The lane on the right is blocked with the phospho peptide.



Immunohistochemistry analysis of paraffin-embedded human lung carcinoma, using Cyclin D3 (Phospho-Thr283) Antibody. The picture on the right is blocked with the phospho peptide.

This product is suitable for in-vitro studies under the RESEARCH USE ONLY [RUO] licence. This product must not be used as for diagnostic or other medical purposes.
St John's Laboratory Ltd, Knowledge Dock Business Centre, University Way, London, E16 2RD | Tel: 0208 223 3081