

Anti-Phospho-SRC-Tyr529 antibody (460-540) (STJ90238)

STJ90238

GENERAL INFORMATION

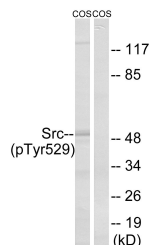
Product Type	Primary antibodies
Short Description	Rabbit polyclonal antibody anti-Phospho-Proto-Oncogene Tyrosine-Protein Kinase Src-Tyr529 (460-540) is suitable for use in Western Blot, Immunohistochemistry, Immunofluorescence and ELISA research applications.
Applications	WB, IHC-P, IF-P, ELISA
Host/Source	Rabbit
Reactivity	Human, Mouse, Rat, Monkey

PRODUCT PROPERTIES

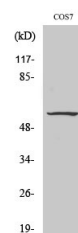
Clonality	Polyclonal
Clone ID	
Concentration	1 mg/mL
Conjugation	Unconjugated
Purification	The antibody was affinity-purified from rabbit anti-serum by affinity-chromatography.
Dilution Range	WB 1:500-1:2000 IHC 1:100-1:300 ELISA 1:10000
Formulation	PBS, 50% Glycerol, 0.5% BSA and 0.02% Sodium Azide.
Isotype	IgG
Storage Instruction	Store at -20°C for up to 1 year from the date of receipt, and avoid repeat freeze-thaw cycles.

TARGET INFORMATION

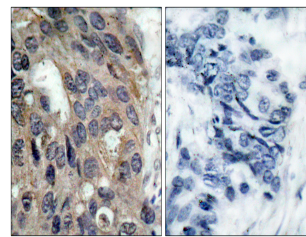
Gene ID	6714
Gene Symbol	SRC
Uniprot ID	SRC_HUMAN
Immunogen	The antiserum was produced against synthesized peptide derived from human Src around the phosphorylation site of Tyr529 at amino acid range 487-536
Immunogen Region	460-540
Specificity	Phospho-SRC-Tyr529 polyclonal antibody (Proto-Oncogene Tyrosine-Protein Kinase Src) binds to endogenous Proto-Oncogene Tyrosine-Protein Kinase Src at the amino acid region 460-540 only when phosphorylated at Tyr529.
Immunogen Sequence	



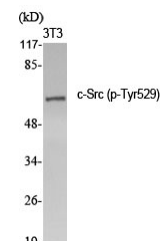
Western blot analysis of lysates from COS7 cells treated with PMA 125ng/ml 30', using Src (Phospho-Tyr529) Antibody. The lane on the right is blocked with the phospho peptide.



Western blot analysis of COS7 cells using Phospho-c-Src (Y529) Polyclonal Antibody diluted at 1: 2000



Immunohistochemistry analysis of paraffin-embedded human breast carcinoma, using Src (Phospho-Tyr529) Antibody. The picture on the right is blocked with the phospho peptide.



Western blot analysis of various cells using Phospho-c-Src (Y529) Polyclonal Antibody diluted at 1: 2000

This product is suitable for in-vitro studies under the RESEARCH USE ONLY [RUO] licence. This product must not be used as for diagnostic or other medical purposes.
St John's Laboratory Ltd, Knowledge Dock Business Centre, University Way, London, E16 2RD | Tel: 0208 223 3081