

Anti-Phospho-CREB1-Ser133 antibody (70-150) (STJ90235)

STJ90235

GENERAL INFORMATION

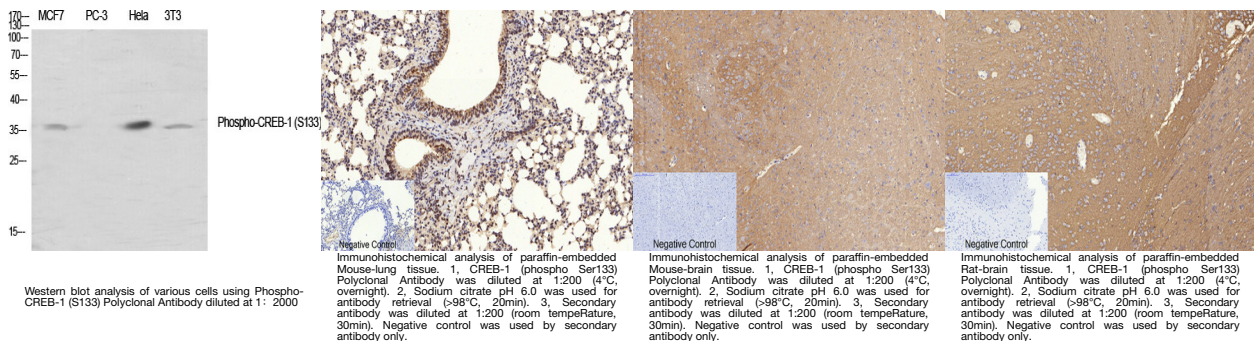
Product Type	Primary antibodies
Short Description	Rabbit polyclonal antibody anti-Phospho-Cyclic Amp-Responsive Element-Binding Protein 1-Ser133 (70-150) is suitable for use in Immunofluorescence, Immunocytochemistry, Western Blot, Immunohistochemistry, Immunoprecipitation and ELISA research applica
Applications	IF, ICC, WB, IHC-P, IP, ELISA
Host/Source	Rabbit
Reactivity	Human, Mouse, Rat

PRODUCT PROPERTIES

Clonality	Polyclonal
Clone ID	
Concentration	1 mg/mL
Conjugation	Unconjugated
Purification	The antibody was affinity-purified from rabbit anti-serum by affinity-chromatography.
Dilution	IF 1:50-200
Range	WB 1:500-1:2000 IHC 1:100-1:300 IP 2-5 ug/mg ELISA 1:10000
Formulation	PBS, 50% Glycerol, 0.5% BSA and 0.02% Sodium Azide.
Isotype	IgG
Storage Instruction	Store at -20°C for up to 1 year from the date of receipt, and avoid repeat freeze-thaw cycles.

TARGET INFORMATION

Gene ID	1385
Gene Symbol	CREB1
Uniprot ID	CREB1_HUMAN
Immunogen	The antiserum was produced against synthesized peptide derived from human CREB around the phosphorylation site of Ser133 at amino acid range 100-149
Immunogen Region	70-150
Specificity	Phospho-CREB1-Ser133 polyclonal antibody (Cyclic Amp-Responsive Element-Binding Protein 1) binds to endogenous Cyclic Amp-Responsive Element-Binding Protein 1 at the amino acid region 70-150 only when phosphorylated at Ser133.
Immunogen Sequence	



This product is suitable for in-vitro studies under the RESEARCH USE ONLY [RUO] licence. This product must not be used as for diagnostic or other medical purposes.
 St John's Laboratory Ltd, Knowledge Dock Business Centre, University Way, London, E16 2RD | Tel: 0208 223 3081