

Anti-Phospho-PPP1R14A-Thr38 antibody (10-90) (STJ90233)

STJ90233

GENERAL INFORMATION

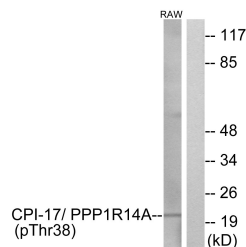
Product Type	Primary antibodies
Short Description	Rabbit polyclonal antibody anti-Phospho-Protein Phosphatase 1 Regulatory Subunit 14a-Thr38 (10-90) is suitable for use in Western Blot, Immunohistochemistry, Immunofluorescence and ELISA research applications.
Applications	WB, IHC-P, IF-P, ELISA
Host/Source	Rabbit
Reactivity	Human, Mouse, Rat

PRODUCT PROPERTIES

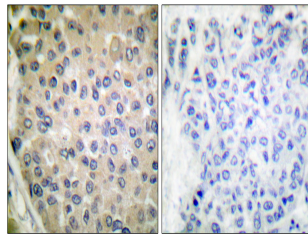
Clonality	Polyclonal
Clone ID	
Concentration	1 mg/mL
Conjugation	Unconjugated
Purification	The antibody was affinity-purified from rabbit anti-serum by affinity-chromatography.
Dilution Range	WB 1:500-1:2000 IHC 1:100-1:300 ELISA 1:20000
Formulation	PBS, 50% Glycerol, 0.5% BSA and 0.02% Sodium Azide.
Isotype	IgG
Storage Instruction	Store at -20°C for up to 1 year from the date of receipt, and avoid repeat freeze-thaw cycles.

TARGET INFORMATION

Gene ID	94274
Gene Symbol	PPP1R14A
Uniprot ID	PP14A_HUMAN
Immunogen	The antiserum was produced against synthesized peptide derived from human CPI17 alpha around the phosphorylation site of Thr38 at amino acid range 5-54
Immunogen Region	10-90
Specificity	Phospho-PPP1R14A-Thr38 polyclonal antibody (Protein Phosphatase 1 Regulatory Subunit 14a) binds to endogenous Protein Phosphatase 1 Regulatory Subunit 14a at the amino acid region 10-90 only when phosphorylated at Thr38.
Immunogen Sequence	



Western blot analysis of lysates from RAW264.7 cells, using CPI17 alpha (Phospho-Thr38) Antibody. The lane on the right is blocked with the phospho peptide.



Immunohistochemistry analysis of paraffin-embedded human breast carcinoma, using CPI17 alpha (Phospho-Thr38) Antibody. The picture on the right is blocked with the phospho peptide.

This product is suitable for in-vitro studies under the RESEARCH USE ONLY [RUO] licence. This product must not be used as for diagnostic or other medical purposes.
St John's Laboratory Ltd, Knowledge Dock Business Centre, University Way, London, E16 2RD | Tel: 0208 223 3081