

Anti-Phospho-CTTN-Tyr421 antibody (360-440) (STJ90232)

STJ90232

GENERAL INFORMATION

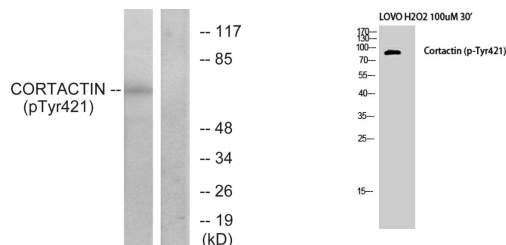
Product Type	Primary antibodies
Short Description	Rabbit polyclonal antibody anti-Phospho-Src Substrate Cortactin-Tyr421 (360-440) is suitable for use in Western Blot, Immunohistochemistry, Immunofluorescence and ELISA research applications.
Applications	WB, IHC-P, IF-P, ELISA
Host/Source	Rabbit
Reactivity	Human, Mouse, Rat

PRODUCT PROPERTIES

Clonality	Polyclonal
Clone ID	
Concentration	1 mg/mL
Conjugation	Unconjugated
Purification	The antibody was affinity-purified from rabbit anti-serum by affinity-chromatography.
Dilution Range	WB 1:500-1:2000 IHC 1:100-1:300 ELISA 1:20000
Formulation	PBS, 50% Glycerol, 0.5% BSA and 0.02% Sodium Azide.
Isotype	IgG
Storage Instruction	Store at -20°C for up to 1 year from the date of receipt, and avoid repeat freeze-thaw cycles.

TARGET INFORMATION

Gene ID	2017
Gene Symbol	CTTN
Uniprot ID	SRC8_HUMAN
Immunogen	The antiserum was produced against synthesized peptide derived from human Cortactin around the phosphorylation site of Tyr421 at amino acid range 388-437
Immunogen Region	360-440
Specificity	Phospho-CTTN-Tyr421 polyclonal antibody (Src Substrate Cortactin) binds to endogenous Src Substrate Cortactin at the amino acid region 360-440 only when phosphorylated at Tyr421.
Immunogen Sequence	



Western blot analysis of lysates from HeLa cells treated with H₂O₂, using Cortactin (Phospho-Tyr421) Antibody. The lane on the right is blocked with the phospho peptide.

Western blot analysis of LOVO+H₂O₂ cells using Phospho-Cortactin (Y421) Polyclonal Antibody

This product is suitable for in-vitro studies under the RESEARCH USE ONLY [RUO] licence. This product must not be used as for diagnostic or other medical purposes.
St John's Laboratory Ltd, Knowledge Dock Business Centre, University Way, London, E16 2RD | Tel: 0208 223 3081