

Anti-Phospho-MYC-Thr358 antibody (300-380) (STJ90228)

STJ90228

GENERAL INFORMATION

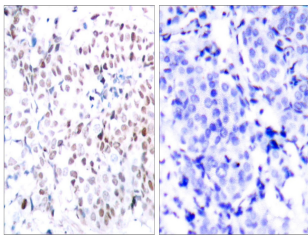
Product Type	Primary antibodies
Short Description	Rabbit polyclonal antibody anti-Phospho-Myc Proto-Oncogene Protein-Thr358 (300-380) is suitable for use in Immunohistochemistry, Immunofluorescence, Immunoprecipitation and ELISA research applications.
Applications	IHC-P, IF-P, IP, ELISA
Host/Source	Rabbit
Reactivity	Human, Mouse, Rat

PRODUCT PROPERTIES

Clonality	Polyclonal
Clone ID	
Concentration	1 mg/mL
Conjugation	Unconjugated
Purification	The antibody was affinity-purified from rabbit anti-serum by affinity-chromatography.
Dilution	IHC 1:100-1:300
Range	IP 2-5 ug/mg ELISA 1:20000
Formulation	PBS, 50% Glycerol, 0.5% BSA and 0.02% Sodium Azide.
Isotype	IgG
Storage	Store at -20°C for up to 1 year from the date of receipt, and avoid repeat freeze-thaw cycles.
Instruction	

TARGET INFORMATION

Gene ID	4609
Gene Symbol	MYC
Uniprot ID	MYC_HUMAN
Immunogen	The antiserum was produced against synthesized peptide derived from human Myc around the phosphorylation site of Thr358 at amino acid range 325-374
Immunogen Region	300-380
Specificity	Phospho-MYC-Thr358 polyclonal antibody (Myc Proto-Oncogene Protein) binds to endogenous Myc Proto-Oncogene Protein at the amino acid region 300-380 only when phosphorylated at Thr358.
Immunogen Sequence	



Immunohistochemistry analysis of paraffin-embedded human breast carcinoma, using Myc (Phospho-Thr358) Antibody. The picture on the right is blocked with the phospho peptide.