

Anti-Phospho-MYC-Ser373 antibody (310-390) (STJ90227)

STJ90227

GENERAL INFORMATION

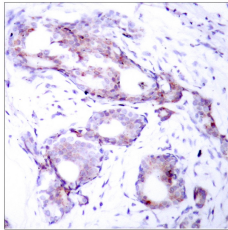
Product Type	Primary antibodies
Short Description	Rabbit polyclonal antibody anti-Phospho-Myc Proto-Oncogene Protein-Ser373 (310-390) is suitable for use in Immunohistochemistry, Immunofluorescence, Immunoprecipitation and ELISA research applications.
Applications	IHC-P, IF-P, IP, ELISA
Host/Source	Rabbit
Reactivity	Human, Mouse, Rat

PRODUCT PROPERTIES

Clonality	Polyclonal
Clone ID	
Concentration	1 mg/mL
Conjugation	Unconjugated
Purification	The antibody was affinity-purified from rabbit anti-serum by affinity-chromatography.
Dilution	IHC 1:100-1:300
Range	IP 2-5 ug/mg ELISA 1:20000
Formulation	PBS, 50% Glycerol, 0.5% BSA and 0.02% Sodium Azide.
Isotype	IgG
Storage	Store at -20°C for up to 1 year from the date of receipt, and avoid repeat freeze-thaw cycles.
Instruction	

TARGET INFORMATION

Gene ID	4609
Gene Symbol	MYC
Uniprot ID	MYC_HUMAN
Immunogen	The antiserum was produced against synthesized peptide derived from human Myc around the phosphorylation site of Ser373 at amino acid range 340-389
Immunogen Region	310-390
Specificity	Phospho-MYC-Ser373 polyclonal antibody (Myc Proto-Oncogene Protein) binds to endogenous Myc Proto-Oncogene Protein at the amino acid region 310-390 only when phosphorylated at Ser373.
Immunogen Sequence	



Immunohistochemistry analysis of paraffin-embedded human breast carcinoma, using Myc (Phospho-Ser373) Antibody.