

## Anti-Phospho-KIT-Tyr721 antibody (660-740) (STJ90226)

STJ90226

### GENERAL INFORMATION

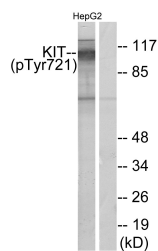
<b>Product Type</b>	Primary antibodies
<b>Short Description</b>	Rabbit polyclonal antibody anti-Phospho-Mast/Stem Cell Growth Factor Receptor Kit-Tyr721 (660-740) is suitable for use in Western Blot and ELISA research applications.
<b>Applications</b>	WB, ELISA
<b>Host/Source</b>	Rabbit
<b>Reactivity</b>	Human, Mouse, Rat

### PRODUCT PROPERTIES

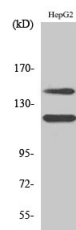
<b>Clonality</b>	Polyclonal
<b>Clone ID</b>	
<b>Concentration</b>	1 mg/mL
<b>Conjugation</b>	Unconjugated
<b>Purification</b>	The antibody was affinity-purified from rabbit anti-serum by affinity-chromatography.
<b>Dilution</b>	WB 1:500-1:2000
<b>Range</b>	ELISA 1:10000
<b>Formulation</b>	PBS, 50% Glycerol, 0.5% BSA and 0.02% Sodium Azide.
<b>Isotype</b>	IgG
<b>Storage Instruction</b>	Store at -20°C for up to 1 year from the date of receipt, and avoid repeat freeze-thaw cycles.

### TARGET INFORMATION

<b>Gene ID</b>	3815
<b>Gene Symbol</b>	KIT
<b>Uniprot ID</b>	KIT_HUMAN
<b>Immunogen</b>	The antiserum was produced against synthesized peptide derived from human c-Kit around the phosphorylation site of Tyr721 at amino acid range 688-737
<b>Immunogen Region</b>	660-740
<b>Specificity</b>	Phospho-KIT-Tyr721 polyclonal antibody (Mast/Stem Cell Growth Factor Receptor Kit) binds to endogenous Mast/Stem Cell Growth Factor Receptor Kit at the amino acid region 660-740 only when phosphorylated at Tyr721.
<b>Immunogen Sequence</b>	



Western blot analysis of lysates from HepG2 cells treated with EGF 200ng/ml 30', using c-Kit (Phospho-Tyr721) Antibody. The lane on the right is blocked with the phospho peptide.



Western blot analysis of various cells using Phospho-c-Kit (Y721) Polyclonal Antibody

This product is suitable for in-vitro studies under the RESEARCH USE ONLY [RUO] licence. This product must not be used as for diagnostic or other medical purposes.  
 St John's Laboratory Ltd, Knowledge Dock Business Centre, University Way, London, E16 2RD | Tel: 0208 223 3081