

Anti-Phospho-CHEK2-Thr68 antibody (10-90) (STJ90225)

STJ90225

GENERAL INFORMATION

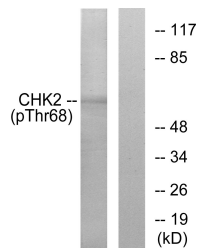
Product Type	Primary antibodies
Short Description	Rabbit polyclonal antibody anti-Phospho-Serine/Threonine-Protein Kinase Chk2-Thr68 (10-90) is suitable for use in Immunofluorescence, Immunocytochemistry, Western Blot, Immunohistochemistry and ELISA research applications.
Applications	IF, ICC, WB, IHC-P, ELISA
Host/Source	Rabbit
Reactivity	Human, Mouse, Rat

PRODUCT PROPERTIES

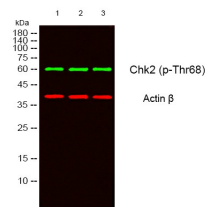
Clonality	Polyclonal
Clone ID	
Concentration	1 mg/mL
Conjugation	Unconjugated
Purification	The antibody was affinity-purified from rabbit anti-serum by affinity-chromatography.
Dilution	IF 1:50-200
Range	WB 1:500-1:2000 IHC 1:100-1:300 ELISA 1:20000
Formulation	PBS, 50% Glycerol, 0.5% BSA and 0.02% Sodium Azide.
Isotype	IgG
Storage Instruction	Store at -20°C for up to 1 year from the date of receipt, and avoid repeat freeze-thaw cycles.

TARGET INFORMATION

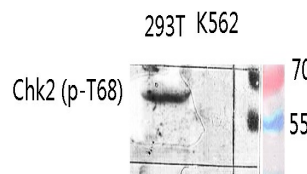
Gene ID	11200
Gene Symbol	CHEK2
Uniprot ID	CHK2_HUMAN
Immunogen	The antiserum was produced against synthesized peptide derived from human Chk2 around the phosphorylation site of Thr68 at amino acid range 35-84
Immunogen Region	10-90
Specificity	Phospho-CHEK2-Thr68 polyclonal antibody (Serine/Threonine-Protein Kinase Chk2) binds to endogenous Serine/Threonine-Protein Kinase Chk2 at the amino acid region 10-90 only when phosphorylated at Thr68.
Immunogen Sequence	



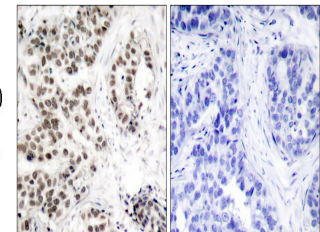
Western blot analysis of lysates from Jurkat cells treated with UV, using Chk2 (Phospho-Thr68) Antibody. The lane on the right is blocked with the phospho peptide.



Western blot analysis of lysates from 1) 293T, 2) HELA cells, (Green) primary antibody was diluted at 1:1000, 4°C over night, secondary antibody (cat: NA) was diluted at 1:10000, 37°C 1hour. (Red) Actin Beta monoclonal antibody (SB7) (cat: (STJ96930) antibody was diluted at 1:5000 as loading control, 4°C over night, secondary antibody (cat: NA) was diluted at 1:10000, 37°C 1hour.



Western blot analysis of various lysis using Phospho-Chk2 (T68) Polyclonal Antibody diluted at 1: 500. Secondary antibody was diluted at 1:20000 cells nucleus extracted by Minute TM Cytoplasmic and Nuclear Fractionation kit (SC-003, Inventibiotech, MN, USA).



Immunohistochemistry analysis of paraffin-embedded human lung carcinoma, using Chk2 (Phospho-Thr68) Antibody. The picture on the right is blocked with the phospho peptide.