

Anti-Phospho-CHEK2-Ser516 antibody (460-540) (STJ90224)

STJ90224

GENERAL INFORMATION

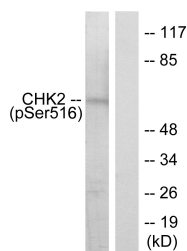
| | |
|--------------------------|--------------------------------------------------------------------------------------------------------------------------------------------------------------------|
| Product Type | Primary antibodies |
| Short Description | Rabbit polyclonal antibody anti-Phospho-Serine/Threonine-Protein Kinase Chk2-Ser516 (460-540) is suitable for use in Western Blot and ELISA research applications. |
| Applications | WB, ELISA |
| Host/Source | Rabbit |
| Reactivity | Human, Monkey |

PRODUCT PROPERTIES

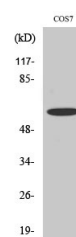
| | |
|----------------------|------------------------------------------------------------------------------------------------|
| Clonality | Polyclonal |
| Clone ID | |
| Concentration | 1 mg/mL |
| Conjugation | Unconjugated |
| Purification | The antibody was affinity-purified from rabbit anti-serum by affinity-chromatography. |
| Dilution | WB 1:500-1:2000 |
| Range | ELISA 1:10000 |
| Formulation | PBS, 50% Glycerol, 0.5% BSA and 0.02% Sodium Azide. |
| Isotype | IgG |
| Storage | Store at -20°C for up to 1 year from the date of receipt, and avoid repeat freeze-thaw cycles. |
| Instruction | |

TARGET INFORMATION

| | |
|---------------------------|---------------------------------------------------------------------------------------------------------------------------------------------------------------------------------------------------------------|
| Gene ID | 11200 |
| Gene Symbol | CHEK2 |
| Uniprot ID | CHK2_HUMAN |
| Immunogen | The antiserum was produced against synthesized peptide derived from human Chk2 around the phosphorylation site of Ser516 at amino acid range 486-535 |
| Immunogen Region | 460-540 |
| Specificity | Phospho-CHEK2-Ser516 polyclonal antibody (Serine/Threonine-Protein Kinase Chk2) binds to endogenous Serine/Threonine-Protein Kinase Chk2 at the amino acid region 460-540 only when phosphorylated at Ser516. |
| Immunogen Sequence | |



Western blot analysis of lysates from HeLa cells treated with UV, using Chk2 (Phospho-Ser516) Antibody. The lane on the right is blocked with the phospho peptide.



Western blot analysis of various cells using Phospho-Chk2 (SS16) Polyclonal Antibody cells nucleus extracted by Minute™ Cytoplasmic and Nuclear Fractionation kit (SC-003, InventiBiotech, MN, USA).

This product is suitable for in-vitro studies under the RESEARCH USE ONLY [RUO] licence. This product must not be used as for diagnostic or other medical purposes.
 St John's Laboratory Ltd, Knowledge Dock Business Centre, University Way, London, E16 2RD | Tel: 0208 223 3081