

Anti-Phospho-CDC25C-Ser216 antibody (160-240) (STJ90218)

STJ90218

GENERAL INFORMATION

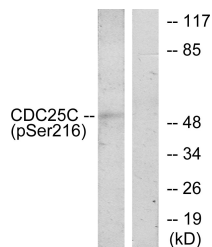
Product Type	Primary antibodies
Short Description	Rabbit polyclonal antibody anti-Phospho-M-Phase Inducer Phosphatase 3-Ser216 (160-240) is suitable for use in Western Blot, Immunohistochemistry, Immunofluorescence and ELISA research applications.
Applications	WB, IHC-P, IF-P, ELISA
Host/Source	Rabbit
Reactivity	Human, Rat, Mouse

PRODUCT PROPERTIES

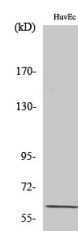
Clonality	Polyclonal
Clone ID	
Concentration	1 mg/mL
Conjugation	Unconjugated
Purification	The antibody was affinity-purified from rabbit anti-serum by affinity-chromatography.
Dilution	WB 1:500-1:2000
Range	IHC 1:100-1:300 ELISA 1:10000
Formulation	PBS, 50% Glycerol, 0.5% BSA and 0.02% Sodium Azide.
Isotype	IgG
Storage Instruction	Store at -20°C for up to 1 year from the date of receipt, and avoid repeat freeze-thaw cycles.

TARGET INFORMATION

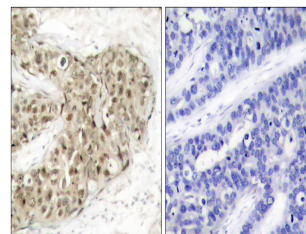
Gene ID	995
Gene Symbol	CDC25C
Uniprot ID	MPIP3_HUMAN
Immunogen	The antiserum was produced against synthesized peptide derived from human CDC25C around the phosphorylation site of Ser216 at amino acid range 183-232
Immunogen Region	160-240
Specificity	Phospho-CDC25C-Ser216 polyclonal antibody (M-Phase Inducer Phosphatase 3) binds to endogenous M-Phase Inducer Phosphatase 3 at the amino acid region 160-240 only when phosphorylated at Ser216.
Immunogen Sequence	



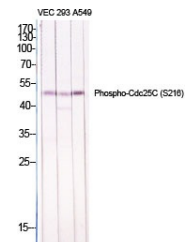
Western blot analysis of lysates from HUVeC cells treated with serum 20% 30', using CDC25C (Phospho-Ser216) Antibody. The lane on the right is blocked with the phospho peptide.



Western blot analysis of HuvEc cells using Phospho-Cdc25C (S216) Polyclonal Antibody diluted at 1: 1000



Immunohistochemistry analysis of paraffin-embedded human breast carcinoma, using CDC25C (Phospho-Ser216) Antibody. The picture on the right is blocked with the phospho peptide.



Western blot analysis of various cells using Phospho-Cdc25C (S216) Polyclonal Antibody diluted at 1: 1000

This product is suitable for in-vitro studies under the RESEARCH USE ONLY [RUO] licence. This product must not be used as for diagnostic or other medical purposes.
St John's Laboratory Ltd, Knowledge Dock Business Centre, University Way, London, E16 2RD | Tel: 0208 223 3081