

Anti-Phospho-CDC25B-Ser323 antibody (260-340) (STJ90217)

STJ90217

GENERAL INFORMATION

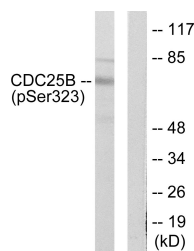
Product Type	Primary antibodies
Short Description	Rabbit polyclonal antibody anti-Phospho-M-Phase Inducer Phosphatase 2-Ser323 (260-340) is suitable for use in Western Blot, Immunohistochemistry, Immunofluorescence and ELISA research applications.
Applications	WB, IHC-P, IF-P, ELISA
Host/Source	Rabbit
Reactivity	Human, Mouse, Rat

PRODUCT PROPERTIES

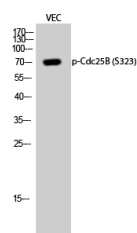
Clonality	Polyclonal
Clone ID	
Concentration	1 mg/mL
Conjugation	Unconjugated
Purification	The antibody was affinity-purified from rabbit anti-serum by affinity-chromatography.
Dilution	WB 1:500-1:2000
Range	ELISA 1:20000
Formulation	PBS, 50% Glycerol, 0.5% BSA and 0.02% Sodium Azide.
Isotype	IgG
Storage Instruction	Store at -20°C for up to 1 year from the date of receipt, and avoid repeat freeze-thaw cycles.

TARGET INFORMATION

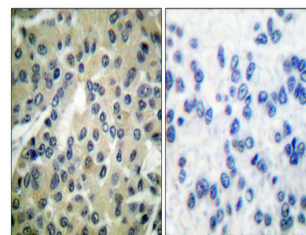
Gene ID	994
Gene Symbol	CDC25B
Uniprot ID	MPIP2_HUMAN
Immunogen	The antiserum was produced against synthesized peptide derived from human CDC25B around the phosphorylation site of Ser323 at amino acid range 289-338
Immunogen Region	260-340
Specificity	Phospho-CDC25B-Ser323 polyclonal antibody (M-Phase Inducer Phosphatase 2) binds to endogenous M-Phase Inducer Phosphatase 2 at the amino acid region 260-340 only when phosphorylated at Ser323.
Immunogen Sequence	



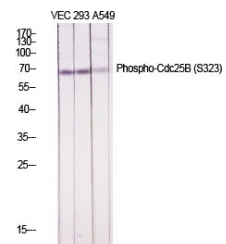
Western blot analysis of lysates from NIH/3T3 cells treated with PMA 125ng/ml 30', using CDC25B (Phospho-Ser323) Antibody. The lane on the right is blocked with the phospho peptide.



Western blot analysis of VEC cells using Phospho-Cdc25B (S323) Polyclonal Antibody diluted at 1: 1000



Immunohistochemical analysis of paraffin-embedded Human breast cancer. Antibody was diluted at 1:100 (4°C overnight). High-pressure and temperature Tris-EDTA, pH8.0 was used for antigen retrieval. Negative control (right) obtained from antibody was pre-absorbed by immunogen peptide.



Western blot analysis of various cells using Phospho-Cdc25B (S323) Polyclonal Antibody diluted at 1: 1000

This product is suitable for in-vitro studies under the RESEARCH USE ONLY [RUO] licence. This product must not be used as for diagnostic or other medical purposes.
 St John's Laboratory Ltd, Knowledge Dock Business Centre, University Way, London, E16 2RD | Tel: 0208 223 3081