

## Anti-Phospho-CDC25A-Ser75 antibody (20-100) (STJ90216)

STJ90216

### GENERAL INFORMATION

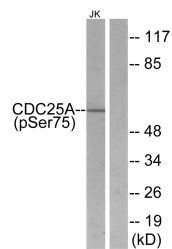
<b>Product Type</b>	Primary antibodies
<b>Short Description</b>	Rabbit polyclonal antibody anti-Phospho-M-Phase Inducer Phosphatase 1-Ser75 (20-100) is suitable for use in Western Blot and ELISA research applications.
<b>Applications</b>	WB, ELISA
<b>Host/Source</b>	Rabbit
<b>Reactivity</b>	Human, Mouse, Rat

### PRODUCT PROPERTIES

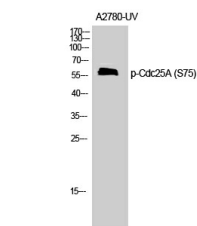
<b>Clonality</b>	Polyclonal
<b>Clone ID</b>	
<b>Concentration</b>	1 mg/mL
<b>Conjugation</b>	Unconjugated
<b>Purification</b>	The antibody was affinity-purified from rabbit anti-serum by affinity-chromatography.
<b>Dilution</b>	WB 1:500-1:2000
<b>Range</b>	ELISA 1:10000
<b>Formulation</b>	PBS, 50% Glycerol, 0.5% BSA and 0.02% Sodium Azide.
<b>Isotype</b>	IgG
<b>Storage Instruction</b>	Store at -20°C for up to 1 year from the date of receipt, and avoid repeat freeze-thaw cycles.

### TARGET INFORMATION

<b>Gene ID</b>	993
<b>Gene Symbol</b>	CDC25A
<b>Uniprot ID</b>	MPIP1_HUMAN
<b>Immunogen</b>	The antiserum was produced against synthesized peptide derived from human CDC25A around the phosphorylation site of Ser75 at amino acid range 43-92
<b>Immunogen Region</b>	20-100
<b>Specificity</b>	Phospho-CDC25A-Ser75 polyclonal antibody (M-Phase Inducer Phosphatase 1) binds to endogenous M-Phase Inducer Phosphatase 1 at the amino acid region 20-100 only when phosphorylated at Ser75.
<b>Immunogen Sequence</b>	



Western blot analysis of lysates from Jurkat cells treated with UV, using CDC25A (Phospho-Ser75) Antibody. The lane on the right is blocked with the phospho peptide.



Western blot analysis of Jurkat cells using Phospho-Cdc25A (S75) Polyclonal Antibody