

Anti-Phospho-CDK1-Thr161 antibody (100-180) (STJ90213)

STJ90213

GENERAL INFORMATION

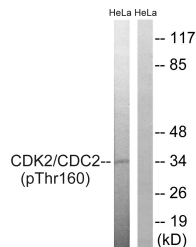
Product Type	Primary antibodies
Short Description	Rabbit polyclonal antibody anti-Phospho-Cyclin-Dependent Kinase 1-Thr161 (100-180) is suitable for use in Western Blot, Immunohistochemistry, Immunofluorescence and ELISA research applications.
Applications	WB, IHC-P, IF-P, ELISA
Host/Source	Rabbit
Reactivity	Human, Mouse, Rat

PRODUCT PROPERTIES

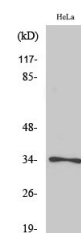
Clonality	Polyclonal
Clone ID	
Concentration	1 mg/mL
Conjugation	Unconjugated
Purification	The antibody was affinity-purified from rabbit anti-serum by affinity-chromatography.
Dilution Range	WB 1:500-1:2000 IHC 1:100-1:300 ELISA 1:5000
Formulation	PBS, 50% Glycerol, 0.5% BSA and 0.02% Sodium Azide.
Isotype	IgG
Storage Instruction	Store at 20°C for up to 1 year from the date of receipt, and avoid repeat freeze-thaw cycles.

TARGET INFORMATION

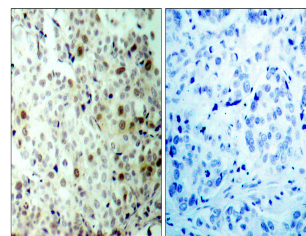
Gene ID	983
Gene Symbol	CDK1
Uniprot ID	CDK1_HUMAN
Immunogen	The antiserum was produced against synthesized peptide derived from human CDC2 around the phosphorylation site of Thr161 at amino acid range 131-180
Immunogen Region	100-180
Specificity	Phospho-CDK1-Thr161 polyclonal antibody (Cyclin-Dependent Kinase 1) binds to endogenous Cyclin-Dependent Kinase 1 at the amino acid region 100-180 only when phosphorylated at Thr161.
Immunogen Sequence	



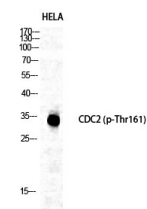
Western blot analysis of lysates from HeLa cells, using CDC2 (Phospho-Thr161) Antibody. The lane on the right is blocked with the phospho peptide.



Western blot analysis of HeLa cells using Phospho-Cdc2 (T161) Polyclonal Antibody diluted at 1: 1000



Immunohistochemistry analysis of paraffin-embedded human breast carcinoma, using CDC2 (Phospho-Thr161) Antibody. The picture on the right is blocked with the phospho peptide.



Western blot analysis of various cells using Phospho-Cdc2 (T161) Polyclonal Antibody diluted at 1: 1000

This product is suitable for in-vitro studies under the RESEARCH USE ONLY [RUO] licence. This product must not be used as for diagnostic or other medical purposes.
St John's Laboratory Ltd, Knowledge Dock Business Centre, University Way, London, E16 2RD | Tel: 0208 223 3081