

Anti-Phospho-CAV1-Tyr14 antibody (1-80) (STJ90210)

STJ90210

GENERAL INFORMATION

Product Type	Primary antibodies
Short Description	Rabbit polyclonal antibody anti-Phospho-Caveolin-1-Tyr14 (1-80) is suitable for use in Western Blot and ELISA research applications.
Applications	WB, ELISA
Host/Source	Rabbit
Reactivity	Human, Mouse, Rat

PRODUCT PROPERTIES

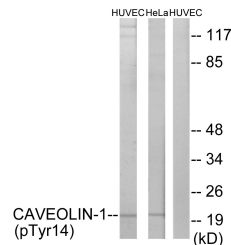
Clonality	Polyclonal
Clone ID	
Concentration	1 mg/mL
Conjugation	Unconjugated
Purification	The antibody was affinity-purified from rabbit anti-serum by affinity-chromatography.
Dilution Range	WB 1:500-1:2000 ELISA 1:20000
Formulation	PBS, 50% Glycerol, 0.5% BSA and 0.02% Sodium Azide.
Isotype	IgG
Storage	Store at -20°C for up to 1 year from the date of receipt, and avoid repeat freeze-thaw cycles.
Instruction	

TARGET INFORMATION

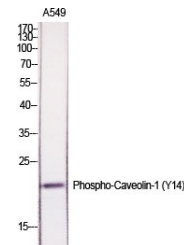
Gene ID	857
Gene Symbol	CAV1
Uniprot ID	CAV1_HUMAN
Immunogen	The antiserum was produced against synthesized peptide derived from human Caveolin-1 around the phosphorylation site of Tyr14 at amino acid range 5-54
Immunogen Region	1-80
Specificity	Phospho-CAV1-Tyr14 polyclonal antibody (Caveolin-1) binds to endogenous Caveolin-1 at the amino acid region 1-80 only when phosphorylated at Tyr14.
Immunogen Sequence	



Western blot analysis of HeLa cells using Phospho-Caveolin-1 (Y14) Polyclonal Antibody diluted at 1:1000



Western blot analysis of lysates from HUVEC cells treated with PMA 125ng/ml 30' and HeLa cells treated with LPS 100ng/ml 30', using Caveolin-1 (Phospho-Tyr14) Antibody. The lane on the right is blocked with the phospho peptide.



Western blot analysis of various cells using Phospho-Caveolin-1 (Y14) Polyclonal Antibody diluted at 1:1000

This product is suitable for in-vitro studies under the RESEARCH USE ONLY [RUO] licence. This product must not be used as for diagnostic or other medical purposes.
St John's Laboratory Ltd, Knowledge Dock Business Centre, University Way, London, E16 2RD | Tel: 0208 223 3081