

Anti-Phospho-CTNNB1-Thr41/S45 antibody (30-110) (STJ90208)

STJ90208

GENERAL INFORMATION

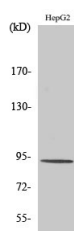
Product Type	Primary antibodies
Short Description	Rabbit polyclonal antibody anti-Phospho-Catenin Beta-1-Thr41/S45 (30-110) is suitable for use in Western Blot and ELISA research applications.
Applications	WB, ELISA
Host/Source	Rabbit
Reactivity	Human, Mouse, Rat

PRODUCT PROPERTIES

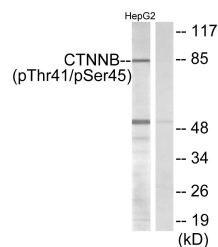
Clonality	Polyclonal
Clone ID	
Concentration	1 mg/mL
Conjugation	Unconjugated
Purification	The antibody was affinity-purified from rabbit anti-serum by affinity-chromatography.
Dilution Range	WB 1:500-1:2000 ELISA 1:20000
Formulation	PBS, 50% Glycerol, 0.5% BSA and 0.02% Sodium Azide.
Isotype	IgG
Storage Instruction	Store at -20°C for up to 1 year from the date of receipt, and avoid repeat freeze-thaw cycles.

TARGET INFORMATION

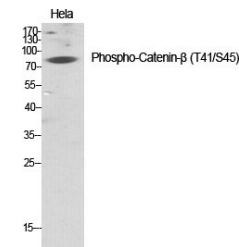
Gene ID	1499
Gene Symbol	CTNNB1
Uniprot ID	CTNB1_HUMAN
Immunogen	The antiserum was produced against synthesized peptide derived from human Catenin-beta around the phosphorylation site of Thr41/Ser45 at amino acid range 11-60
Immunogen Region	30-110
Specificity	Phospho-CTNNB1-Thr41/S45 polyclonal antibody (Catenin Beta-1) binds to endogenous Catenin Beta-1 at the amino acid region 30-110 only when phosphorylated at Thr41/S45.
Immunogen Sequence	



Western blot analysis of HepG2 cells using Phospho-Catenin-Beta (T41/S45) Polyclonal Antibody diluted at 1: 1000



Western blot analysis of lysates from HepG2 cells, using Catenin-beta (Phospho-Thr41/Ser45) Antibody. The lane on the right is blocked with the phospho peptide.



Western blot analysis of various cells using Phospho-Catenin-Beta (T41/S45) Polyclonal Antibody diluted at 1: 1000