

Anti-Phospho-CAMK4-Thr200 antibody (140-220) (STJ90203)

STJ90203

GENERAL INFORMATION

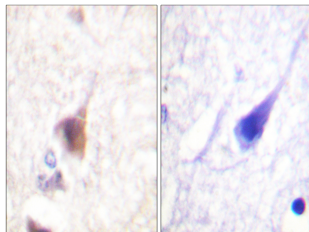
Product Type	Primary antibodies
Short Description	Rabbit polyclonal antibody anti-Phospho-Calcium/Calmodulin-Dependent Protein Kinase Type Iv-Thr200 (140-220) is suitable for use in Western Blot, Immunohistochemistry, Immunofluorescence, Immunocytochemistry and ELISA research applications.
Applications	WB, IHC-P, IF, ICC, ELISA
Host/Source	Rabbit
Reactivity	Human, Mouse, Rat

PRODUCT PROPERTIES

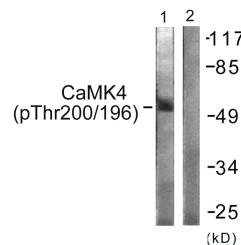
Clonality	Polyclonal
Clone ID	
Concentration	1 mg/mL
Conjugation	Unconjugated
Purification	The antibody was affinity-purified from rabbit anti-serum by affinity-chromatography.
Dilution Range	WB 1:500-1:2000 IHC 1:100-1:300 IF 1:200-1:1000 ELISA 1:40000
Formulation	PBS, 50% Glycerol, 0.5% BSA and 0.02% Sodium Azide.
Isotype	IgG
Storage Instruction	Store at -20°C for up to 1 year from the date of receipt, and avoid repeat freeze-thaw cycles.

TARGET INFORMATION

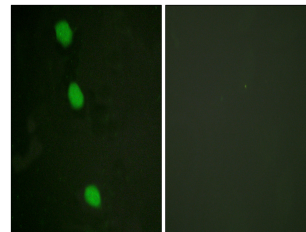
Gene ID	814
Gene Symbol	CAMK4
Uniprot ID	KCC4_HUMAN
Immunogen	The antiserum was produced against synthesized peptide derived from human CaMK4 around the phosphorylation site of Thr196/200 at amino acid range 166-215
Immunogen Region	140-220
Specificity	Phospho-CAMK4-Thr200 polyclonal antibody (Calcium/Calmodulin-Dependent Protein Kinase Type Iv) binds to endogenous Calcium/Calmodulin-Dependent Protein Kinase Type Iv at the amino acid region 140-220 only when phosphorylated at Thr200.
Immunogen Sequence	



Immunohistochemistry analysis of paraffin-embedded human brain, using CaMK4 (Phospho-Thr196/200) Antibody. The picture on the right is blocked with the phospho peptide.



Western blot analysis of lysates from K562 cells treated with H₂O₂ 100uM 30', using CaMK4 (Phospho-Thr196/200) Antibody. The lane on the right is blocked with the phospho peptide.



Immunofluorescence analysis of HeLa cells, using CaMK4 (Phospho-Thr196/200) Antibody. The picture on the right is blocked with the phospho peptide.