

## Anti-Phospho-CaMKII Alpha/Delta-Thr286 antibody (230-310) (STJ90202)

STJ90202

### GENERAL INFORMATION

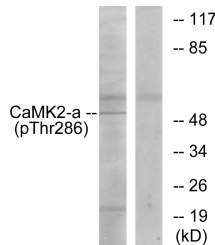
<b>Product Type</b>	Primary antibodies
<b>Short Description</b>	Rabbit polyclonal antibody anti-Phospho-Calcium/calmodulin-dependent protein kinase type II subunit alpha and Calcium/calmodulin-dependent protein kinase type II subunit delta-Thr286 (230-310) is suitable for use in Western Blot, Immunohistochemistry
<b>Applications</b>	WB, IHC-P, IF, ICC, ELISA
<b>Host/Source</b>	Rabbit
<b>Reactivity</b>	Human, Mouse, Rat

### PRODUCT PROPERTIES

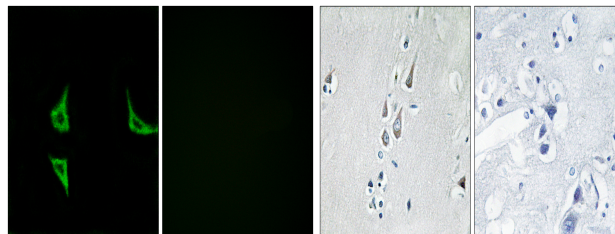
<b>Clonality</b>	Polyclonal
<b>Clone ID</b>	
<b>Concentration</b>	1 mg/mL
<b>Conjugation</b>	Unconjugated
<b>Purification</b>	The antibody was affinity-purified from rabbit anti-serum by affinity-chromatography.
<b>Dilution Range</b>	WB 1:500-1:2000 IHC 1:100-1:300 IF 1:200-1:1000 ELISA 1:10000
<b>Formulation</b>	PBS, 50% Glycerol, 0.5% BSA and 0.02% Sodium Azide.
<b>Isotype</b>	IgG
<b>Storage Instruction</b>	Store at -20°C for up to 1 year from the date of receipt, and avoid repeat freeze-thaw cycles.

### TARGET INFORMATION

<b>Gene ID</b>	815 817
<b>Gene Symbol</b>	CAMK2A CAMK2D
<b>Uniprot ID</b>	KCC2A_HUMAN KCC2D_HUMAN
<b>Immunogen</b>	The antiserum was produced against synthesized peptide derived from human CaMK2 around the phosphorylation site of Thr286 at amino acid range 256-305
<b>Immunogen Region</b>	230-310
<b>Specificity</b>	Phospho-CaMKII Alpha/Delta-Thr286 polyclonal antibody (Calcium/calmodulin-dependent protein kinase type II subunit alpha and Calcium/calmodulin-dependent protein kinase type II subunit delta) binds to endogenous Calcium/calmodulin-dependent protein k
<b>Immunogen Sequence</b>	

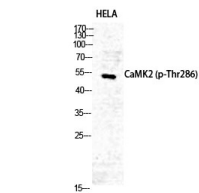


Western blot analysis of lysates from K562 cells, using CaMK2 (Phospho-Thr286) Antibody. The lane on the right is blocked with the phospho peptide.



Immunofluorescence analysis of COS7 cells, using CaMK2 (Phospho-Thr286) Antibody. The picture on the right is blocked with the phospho peptide.

Immunohistochemistry analysis of paraffin-embedded human brain, using CaMK2 (Phospho-Thr286) Antibody. The picture on the right is blocked with the phospho peptide.



Western blot analysis of HELA cells using Phospho-CaMKII Alpha/Delta (T286) Polyclonal Antibody diluted at 1: 500

This product is suitable for in-vitro studies under the RESEARCH USE ONLY [RUO] licence. This product must not be used as for diagnostic or other medical purposes.  
St John's Laboratory Ltd, Knowledge Dock Business Centre, University Way, London, E16 2RD | Tel: 0208 223 3081