

## Anti-Phospho-CEBPB-Thr235 antibody (180-260) (STJ90200)

STJ90200

### GENERAL INFORMATION

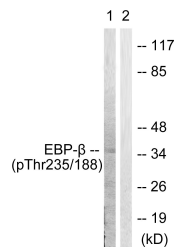
<b>Product Type</b>	Primary antibodies
<b>Short Description</b>	Rabbit polyclonal antibody anti-Phospho-Ccaat/Enhancer-Binding Protein Beta-Thr235 (180-260) is suitable for use in Western Blot, Immunohistochemistry, Immunofluorescence, Immunocytochemistry and ELISA research applications.
<b>Applications</b>	WB, IHC-P, IF, ICC, ELISA
<b>Host/Source</b>	Rabbit
<b>Reactivity</b>	Human, Mouse, Rat

### PRODUCT PROPERTIES

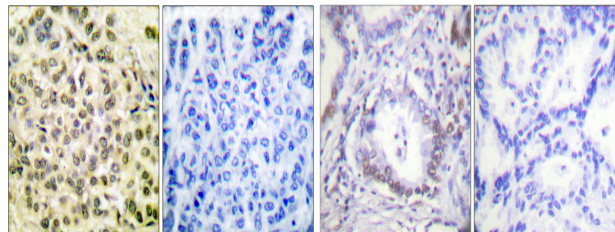
<b>Clonality</b>	Polyclonal
<b>Clone ID</b>	
<b>Concentration</b>	1 mg/mL
<b>Conjugation</b>	Unconjugated
<b>Purification</b>	The antibody was affinity-purified from rabbit anti-serum by affinity-chromatography.
<b>Dilution Range</b>	WB 1:500-1:2000 IHC 1:100-1:300 IF 1:200-1:1000 ELISA 1:10000
<b>Formulation</b>	PBS, 50% Glycerol, 0.5% BSA and 0.02% Sodium Azide.
<b>Isotype</b>	IgG
<b>Storage Instruction</b>	Store at -20°C for up to 1 year from the date of receipt, and avoid repeat freeze-thaw cycles.

### TARGET INFORMATION

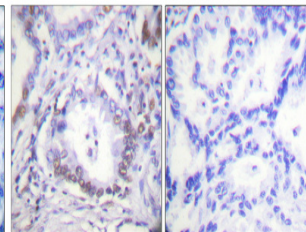
<b>Gene ID</b>	1051
<b>Gene Symbol</b>	CEBPB
<b>Uniprot ID</b>	CEBPB_HUMAN
<b>Immunogen</b>	The antiserum was produced against synthesized peptide derived from human C/EBP-beta around the phosphorylation site of Thr235/188 at amino acid range 201-250
<b>Immunogen Region</b>	180-260
<b>Specificity</b>	Phospho-CEBPB-Thr235 polyclonal antibody (Ccaat/Enhancer-Binding Protein Beta) binds to endogenous Ccaat/Enhancer-Binding Protein Beta at the amino acid region 180-260 only when phosphorylated at Thr235.
<b>Immunogen Sequence</b>	



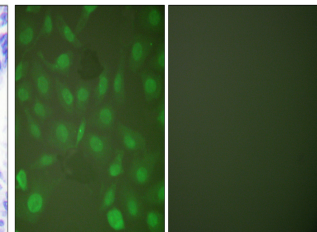
Western blot analysis of lysates from HepG2 cells treated with EGF 200ng/ml 30', using C/EBP-beta (Phospho-Thr235/188) Antibody. The lane on the right is blocked with the phospho peptide.



Immunohistochemistry analysis of paraffin-embedded human breast carcinoma, using C/EBP-beta (Phospho-Thr235/188) Antibody. The picture on the right is blocked with the phospho peptide.



Immunohistochemical analysis of paraffin-embedded Human lung cancer. Antibody was diluted at 1:100 (4°C overnight). High-pressure and temperature Tris-EDTA, pH8.0 was used for antigen retrieval. Negative control (right) obtained from antibody was pre-absorbed by immunogen peptide.



Immunofluorescence analysis of HepG2 cells, using C/EBP-beta (Phospho-Thr235/188) Antibody. The picture on the right is blocked with the phospho peptide.

This product is suitable for in-vitro studies under the RESEARCH USE ONLY [RUO] licence. This product must not be used as for diagnostic or other medical purposes.  
St John's Laboratory Ltd, Knowledge Dock Business Centre, University Way, London, E16 2RD | Tel: 0208 223 3081