

Anti-Phospho-BRCA1-Ser1524 antibody (1460-1540) (STJ90199)

STJ90199

GENERAL INFORMATION

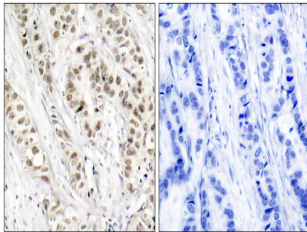
Product Type	Primary antibodies
Short Description	Rabbit polyclonal antibody anti-Phospho-Breast Cancer Type 1 Susceptibility Protein-Ser1524 (1460-1540) is suitable for use in Western Blot, Immunohistochemistry, Immunofluorescence and ELISA research applications.
Applications	WB, IHC-P, IF-P, ELISA
Host/Source	Rabbit
Reactivity	Human, Rat, Mouse

PRODUCT PROPERTIES

Clonality	Polyclonal
Clone ID	
Concentration	1 mg/mL
Conjugation	Unconjugated
Purification	The antibody was affinity-purified from rabbit anti-serum by affinity-chromatography.
Dilution	IHC 1:100-1:300
Range	ELISA 1:10000
Formulation	PBS, 50% Glycerol, 0.5% BSA and 0.02% Sodium Azide.
Isotype	IgG
Storage	Store at -20°C for up to 1 year from the date of receipt, and avoid repeat freeze-thaw cycles.
Instruction	

TARGET INFORMATION

Gene ID	672
Gene Symbol	BRCA1
Uniprot ID	BRCA1_HUMAN
Immunogen	The antiserum was produced against synthesized peptide derived from human BRCA1 around the phosphorylation site of Ser1524 at amino acid range 1491-1540
Immunogen Region	1460-1540
Specificity	Phospho-BRCA1-Ser1524 polyclonal antibody (Breast Cancer Type 1 Susceptibility Protein) binds to endogenous Breast Cancer Type 1 Susceptibility Protein at the amino acid region 1460-1540 only when phosphorylated at Ser1524.
Immunogen Sequence	



Immunohistochemistry analysis of paraffin-embedded human breast carcinoma, using BRCA1 (Phospho-Ser1524) Antibody. The picture on the right is blocked with the phospho-peptide.

This product is suitable for in-vitro studies under the RESEARCH USE ONLY [RUO] licence. This product must not be used as for diagnostic or other medical purposes.
St John's Laboratory Ltd, Knowledge Dock Business Centre, University Way, London, E16 2RD | Tel: 0208 223 3081