

Anti-Phospho-BCR-Tyr177 antibody (120-200) (STJ90196)

STJ90196

GENERAL INFORMATION

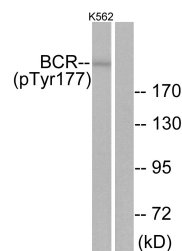
Product Type	Primary antibodies
Short Description	Rabbit polyclonal antibody anti-Phospho-Breakpoint Cluster Region Protein-Tyr177 (120-200) is suitable for use in Western Blot and ELISA research applications.
Applications	WB, ELISA
Host/Source	Rabbit
Reactivity	Human, Mouse

PRODUCT PROPERTIES

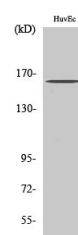
Clonality	Polyclonal
Clone ID	
Concentration	1 mg/mL
Conjugation	Unconjugated
Purification	The antibody was affinity-purified from rabbit anti-serum by affinity-chromatography.
Dilution	WB 1:500-1:2000
Range	ELISA 1:10000
Formulation	PBS, 50% Glycerol, 0.5% BSA and 0.02% Sodium Azide.
Isotype	IgG
Storage	Store at -20°C for up to 1 year from the date of receipt, and avoid repeat freeze-thaw cycles.
Instruction	

TARGET INFORMATION

Gene ID	613
Gene Symbol	BCR
Uniprot ID	BCR_HUMAN
Immunogen	The antiserum was produced against synthesized peptide derived from human Bcr around the phosphorylation site of Tyr177 at amino acid range 144-193
Immunogen Region	120-200
Specificity	Phospho-BCR-Tyr177 polyclonal antibody (Breakpoint Cluster Region Protein) binds to endogenous Breakpoint Cluster Region Protein at the amino acid region 120-200 only when phosphorylated at Tyr177.
Immunogen Sequence	



Western blot analysis of lysates from K562 cells, using Bcr (Phospho-Tyr177) Antibody. The lane on the right is blocked with the phospho peptide.



Western blot analysis of various cells using Phospho-Bcr (Y177) Polyclonal Antibody