

Anti-Phospho-BCL2L1-Ser62 antibody (40-120) (STJ90194)

STJ90194

GENERAL INFORMATION

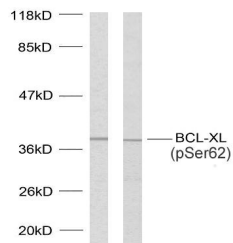
Product Type	Primary antibodies
Short Description	Rabbit polyclonal antibody anti-Phospho-Bcl-2-Like Protein 1-Ser62 (40-120) is suitable for use in Western Blot, Immunohistochemistry, Immunofluorescence and ELISA research applications.
Applications	WB, IHC-P, IF-P, ELISA
Host/Source	Rabbit
Reactivity	Human, Mouse, Rat

PRODUCT PROPERTIES

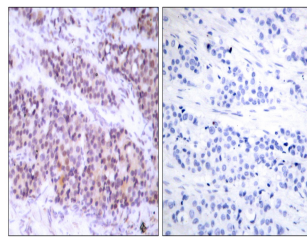
Clonality	Polyclonal
Clone ID	
Concentration	1 mg/mL
Conjugation	Unconjugated
Purification	The antibody was affinity-purified from rabbit anti-serum by affinity-chromatography.
Dilution Range	WB 1:500-1:2000 IHC 1:100-1:300 ELISA 1:10000
Formulation	PBS, 50% Glycerol, 0.5% BSA and 0.02% Sodium Azide.
Isotype	IgG
Storage Instruction	Store at -20°C for up to 1 year from the date of receipt, and avoid repeat freeze-thaw cycles.

TARGET INFORMATION

Gene ID	598
Gene Symbol	BCL2L1
Uniprot ID	B2CL1_HUMAN
Immunogen	The antiserum was produced against synthesized peptide derived from human BCL-XL around the phosphorylation site of Ser62 at amino acid range 28-77
Immunogen Region	40-120
Specificity	Phospho-BCL2L1-Ser62 polyclonal antibody (Bcl-2-Like Protein 1) binds to endogenous Bcl-2-Like Protein 1 at the amino acid region 40-120 only when phosphorylated at Ser62.
Immunogen Sequence	



Western blot analysis of lysates from 293 cells treated with UV and MDA-MB-435 cells treated with UV, using BCL-XL (Phospho-Ser62) Antibody.



Immunohistochemistry analysis of paraffin-embedded human breast carcinoma, using BCL-XL (Phospho-Ser62) Antibody. The picture on the right is blocked with the phospho peptide.

This product is suitable for in-vitro studies under the RESEARCH USE ONLY [RUO] licence. This product must not be used as for diagnostic or other medical purposes.
St John's Laboratory Ltd, Knowledge Dock Business Centre, University Way, London, E16 2RD | Tel: 0208 223 3081