

Anti-Phospho-BCL2-Thr56 antibody (40-120) (STJ90192)

STJ90192

GENERAL INFORMATION

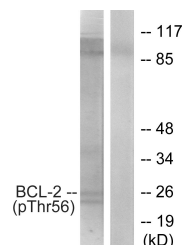
Product Type	Primary antibodies
Short Description	Rabbit polyclonal antibody anti-Phospho-Apoptosis Regulator Bcl-2-Thr56 (40-120) is suitable for use in Western Blot, Immunohistochemistry, Immunoprecipitation, Immunofluorescence, Immunocytochemistry and ELISA research applications.
Applications	WB, IHC-P, IP, IF, ICC, ELISA
Host/Source	Rabbit
Reactivity	Human, Rat, Mouse

PRODUCT PROPERTIES

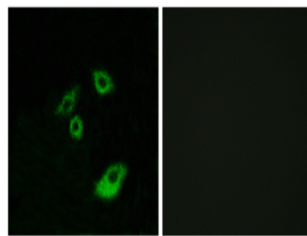
Clonality	Polyclonal
Clone ID	
Concentration	1 mg/mL
Conjugation	Unconjugated
Purification	The antibody was affinity-purified from rabbit anti-serum by affinity-chromatography.
Dilution Range	WB 1:500-1:2000 IHC 1:100-1:300 IP 2-5 ug/mg IF 1:200-1:1000 ELISA 1:20000
Formulation	PBS, 50% Glycerol, 0.5% BSA and 0.02% Sodium Azide.
Isotype	IgG
Storage Instruction	Store at -20°C for up to 1 year from the date of receipt, and avoid repeat freeze-thaw cycles.

TARGET INFORMATION

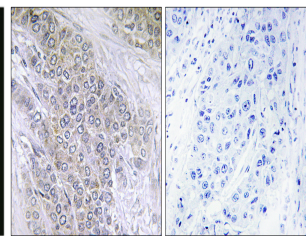
Gene ID	596
Gene Symbol	BCL2
Uniprot ID	BCL2_HUMAN
Immunogen	The antiserum was produced against synthesized peptide derived from human BCL-2 around the phosphorylation site of Thr56 at amino acid range 26-75
Immunogen Region	40-120
Specificity	Phospho-BCL2-Thr56 polyclonal antibody (Apoptosis Regulator Bcl-2) binds to endogenous Apoptosis Regulator Bcl-2 at the amino acid region 40-120 only when phosphorylated at Thr56.
Immunogen Sequence	



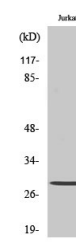
Western blot analysis of lysates from K562 cells treated with H₂O₂ 100uM 30', using BCL-2 (Phospho-Thr56) Antibody. The lane on the right is blocked with the phospho peptide.



Immunofluorescence analysis of A549 cells, using BCL-2 (Phospho-Thr56) Antibody. The picture on the right is blocked with the phospho peptide.



Immunohistochemistry analysis of paraffin-embedded human breast carcinoma, using BCL-2 (Phospho-Thr56) Antibody. The picture on the right is blocked with the phospho peptide.



Western blot analysis of various cells using Phospho-Bcl-2 (T56) Polyclonal Antibody diluted at 1: 500.

This product is suitable for in-vitro studies under the RESEARCH USE ONLY [RUO] licence. This product must not be used as for diagnostic or other medical purposes.
St John's Laboratory Ltd, Knowledge Dock Business Centre, University Way, London, E16 2RD | Tel: 0208 223 3081