

Anti-Phospho-BCL2-Ser70 antibody (10-90) (STJ90191)

STJ90191

GENERAL INFORMATION

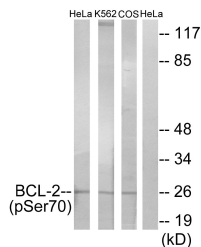
Product Type	Primary antibodies
Short Description	Rabbit polyclonal antibody anti-Phospho-Apoptosis Regulator Bcl-2-Ser70 (10-90) is suitable for use in Western Blot, Immunohistochemistry, Immunofluorescence, Immunoprecipitation and ELISA research applications.
Applications	WB, IHC-P, IF-P, IP, ELISA
Host/Source	Rabbit
Reactivity	Human, Monkey

PRODUCT PROPERTIES

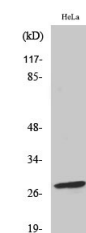
Clonality	Polyclonal
Clone ID	
Concentration	1 mg/mL
Conjugation	Unconjugated
Purification	The antibody was affinity-purified from rabbit anti-serum by affinity-chromatography.
Dilution Range	WB 1:500-1:2000 IHC 1:100-1:300 IP 2-5 ug/mg ELISA 1:10000
Formulation	PBS, 50% Glycerol, 0.5% BSA and 0.02% Sodium Azide.
Isotype	IgG
Storage Instruction	Store at -20°C for up to 1 year from the date of receipt, and avoid repeat freeze-thaw cycles.

TARGET INFORMATION

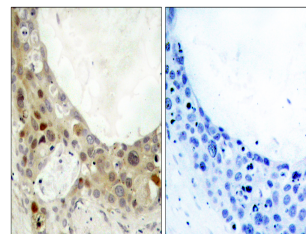
Gene ID	596
Gene Symbol	BCL2
Uniprot ID	BCL2_HUMAN
Immunogen	The antiserum was produced against synthesized peptide derived from human BCL-2 around the phosphorylation site of Ser70 at amino acid range 41-90
Immunogen Region	10-90
Specificity	Phospho-BCL2-Ser70 polyclonal antibody (Apoptosis Regulator Bcl-2) binds to endogenous Apoptosis Regulator Bcl-2 at the amino acid region 10-90 only when phosphorylated at Ser70.
Immunogen Sequence	



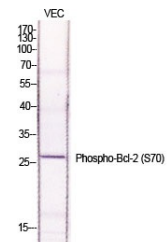
Western blot analysis of lysates from HeLa cells treated with LPS (40nM, 30mins), K562 cells treated with calyculin A (50ng/ml, 30mins), and COS-7 cells treated with H₂O₂ (1ng/ml, 15mins), using BCL-2 (Phospho-Ser70) Antibody. The lane on the right is blocked with the phospho peptide.



Western blot analysis of HeLa cells using Phospho-Bcl-2 (S70) Polyclonal Antibody diluted at 1: 1000



Immunohistochemistry analysis of paraffin-embedded human breast carcinoma, using BCL-2 (Phospho-Ser70) Antibody. The picture on the right is blocked with the phospho peptide.



Western blot analysis of various cells using Phospho-Bcl-2 (S70) Polyclonal Antibody diluted at 1: 1000