

Anti-Phospho-ATF2-Thr71 antibody (10-90) (STJ90186)

STJ90186

GENERAL INFORMATION

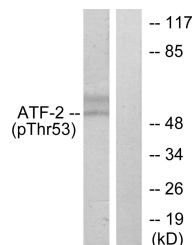
Product Type	Primary antibodies
Short Description	Rabbit polyclonal antibody anti-Phospho-Cyclic Amp-Dependent Transcription Factor Atf-2-Thr71 (10-90) is suitable for use in Western Blot, Immunohistochemistry, Immunofluorescence, Immunoprecipitation and ELISA research applications.
Applications	WB, IHC-P, IF-P, IP, ELISA
Host/Source	Rabbit
Reactivity	Human, Mouse, Rat

PRODUCT PROPERTIES

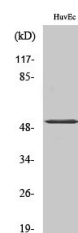
Clonality	Polyclonal
Clone ID	
Concentration	1 mg/mL
Conjugation	Unconjugated
Purification	The antibody was affinity-purified from rabbit anti-serum by affinity-chromatography.
Dilution Range	WB 1:500-1:2000 IHC 1:100-1:300 IP 2-5 ug/mg ELISA 1:20000
Formulation	PBS, 50% Glycerol, 0.5% BSA and 0.02% Sodium Azide.
Isotype	IgG
Storage Instruction	Store at -20°C for up to 1 year from the date of receipt, and avoid repeat freeze-thaw cycles.

TARGET INFORMATION

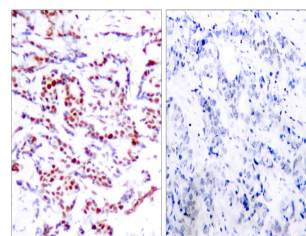
Gene ID	1386
Gene Symbol	ATF2
Uniprot ID	ATF2_HUMAN
Immunogen	The antiserum was produced against synthesized peptide derived from human ATF2 around the phosphorylation site of Thr71 or 53 at amino acid range 38-87
Immunogen Region	10-90
Specificity	Phospho-ATF2-Thr71 polyclonal antibody (Cyclic Amp-Dependent Transcription Factor Atf-2) binds to endogenous Cyclic Amp-Dependent Transcription Factor Atf-2 at the amino acid region 10-90 only when phosphorylated at Thr71.
Immunogen Sequence	



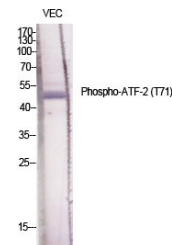
Western blot analysis of lysates from HeLa cells treated with UV, using ATF2 (Phospho-Thr71 or 53) Antibody. The lane on the right is blocked with the phospho peptide.



Western blot analysis of HuvEc cells using Phospho-ATF-2 (T71) Polyclonal Antibody diluted at 1: 1000



Immunohistochemistry analysis of paraffin-embedded human breast carcinoma, using ATF2 (Phospho-Thr71 or 53) Antibody. The picture on the right is blocked with the phospho peptide.



Western blot analysis of various cells using Phospho-ATF-2 (T71) Polyclonal Antibody diluted at 1: 1000

This product is suitable for in-vitro studies under the RESEARCH USE ONLY [RUO] licence. This product must not be used as for diagnostic or other medical purposes.
St John's Laboratory Ltd, Knowledge Dock Business Centre, University Way, London, E16 2RD | Tel: 0208 223 3081