

Anti-Phospho-AR-Ser213 antibody (160-240) (STJ90179)

STJ90179

GENERAL INFORMATION

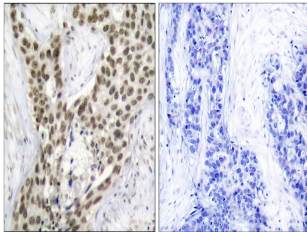
Product Type	Primary antibodies
Short Description	Rabbit polyclonal antibody anti-Phospho-Androgen Receptor-Ser213 (160-240) is suitable for use in Immunohistochemistry, Immunofluorescence and ELISA research applications.
Applications	IHC-P, IF-P, ELISA
Host/Source	Rabbit
Reactivity	Human, Rat, Mouse

PRODUCT PROPERTIES

Clonality	Polyclonal
Clone ID	
Concentration	1 mg/mL
Conjugation	Unconjugated
Purification	The antibody was affinity-purified from rabbit anti-serum by affinity-chromatography.
Dilution Range	IHC 1:100-1:300 ELISA 1:40000
Formulation	PBS, 50% Glycerol, 0.5% BSA and 0.02% Sodium Azide.
Isotype	IgG
Storage	Store at -20°C for up to 1 year from the date of receipt, and avoid repeat freeze-thaw cycles.
Instruction	

TARGET INFORMATION

Gene ID	367
Gene Symbol	AR
Uniprot ID	ANDR_HUMAN
Immunogen	The antiserum was produced against synthesized peptide derived from human Androgen Receptor around the phosphorylation site of Ser213 at amino acid range 186-235
Immunogen Region	160-240
Specificity	Phospho-AR-Ser213 polyclonal antibody (Androgen Receptor) binds to endogenous Androgen Receptor at the amino acid region 160-240 only when phosphorylated at Ser213.
Immunogen Sequence	



Immunohistochemistry analysis of paraffin-embedded human prostate carcinoma, using Androgen Receptor (Phospho-Ser213) Antibody. The picture on the right is blocked with the phospho peptide.