

Anti-Phospho-AKT2-Ser474 antibody (400-480) (STJ90169)

STJ90169

GENERAL INFORMATION

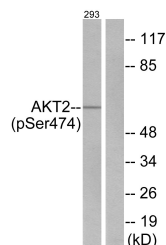
Product Type	Primary antibodies
Short Description	Rabbit polyclonal antibody anti-Phospho-Rac-Beta Serine/Threonine-Protein Kinase-Ser474 (400-480) is suitable for use in Western Blot, Immunohistochemistry, Immunofluorescence and ELISA research applications.
Applications	WB, IHC-P, IF-P, ELISA
Host/Source	Rabbit
Reactivity	Human, Mouse, Rat

PRODUCT PROPERTIES

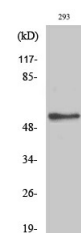
Clonality	Polyclonal
Clone ID	
Concentration	1 mg/mL
Conjugation	Unconjugated
Purification	The antibody was affinity-purified from rabbit anti-serum by affinity-chromatography.
Dilution Range	WB 1:500-1:2000 IHC 1:100-1:300 ELISA 1:20000
Formulation	PBS, 50% Glycerol, 0.5% BSA and 0.02% Sodium Azide.
Isotype	IgG
Storage Instruction	Store at 20°C for up to 1 year from the date of receipt, and avoid repeat freeze-thaw cycles.

TARGET INFORMATION

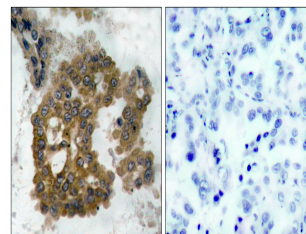
Gene ID	208
Gene Symbol	AKT2
Uniprot ID	AKT2_HUMAN
Immunogen	The antiserum was produced against synthesized peptide derived from human Akt2 around the phosphorylation site of Ser474 at amino acid range 432-481
Immunogen Region	400-480
Specificity	Phospho-AKT2-Ser474 polyclonal antibody (Rac-Beta Serine/Threonine-Protein Kinase) binds to endogenous Rac-Beta Serine/Threonine-Protein Kinase at the amino acid region 400-480 only when phosphorylated at Ser474.
Immunogen Sequence	



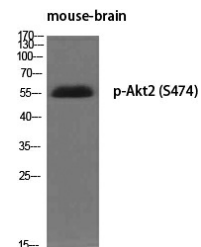
Western blot analysis of lysates from 293 cells treated with EGF 200ng/ml 30', using Akt2 (Phospho-Ser474) Antibody. The lane on the right is blocked with the phospho peptide.



Western blot analysis of 293 cells using Phospho-Akt2 (S474) Polyclonal Antibody diluted at 1: 500



Immunohistochemistry analysis of paraffin-embedded human lung carcinoma, using Akt2 (Phospho-Ser474) Antibody. The picture on the right is blocked with the phospho peptide.



Western blot analysis of various cells using Phospho-Akt2 (S474) Polyclonal Antibody diluted at 1: 500

This product is suitable for in-vitro studies under the RESEARCH USE ONLY [RUO] licence. This product must not be used as for diagnostic or other medical purposes.
St John's Laboratory Ltd, Knowledge Dock Business Centre, University Way, London, E16 2RD | Tel: 0208 223 3081