

Anti-Acetyl-TP73-Lys327 antibody (291-340) (STJ90153)

STJ90153

GENERAL INFORMATION

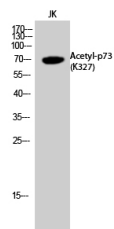
Product Type	Primary antibodies
Short Description	Rabbit polyclonal antibody anti-Acetyl-Tumor Protein P73-Lys327 (291-340) is suitable for use in Western Blot and ELISA research applications.
Applications	WB, ELISA
Host/Source	Rabbit
Reactivity	Human, Mouse, Rat

PRODUCT PROPERTIES

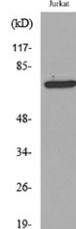
Clonality	Polyclonal
Clone ID	
Concentration	1 mg/mL
Conjugation	Unconjugated
Purification	The antibody was affinity-purified from rabbit anti-serum by affinity-chromatography.
Dilution Range	WB 1:500-1:2000 ELISA 1:20000
Formulation	PBS, 50% Glycerol, 0.5% BSA and 0.02% Sodium Azide.
Isotype	IgG
Storage	Store at -20°C for up to 1 year from the date of receipt, and avoid repeat freeze-thaw cycles.
Instruction	

TARGET INFORMATION

Gene ID	7161
Gene Symbol	TP73
Uniprot ID	P73_HUMAN
Immunogen	The antiserum was produced against synthesized Acetyl-peptide derived from human p73 around the Acetylation site of Lys327 at amino acid range 291-340
Immunogen Region	291-340
Specificity	Acetyl-TP73-Lys327 polyclonal antibody (Tumor Protein P73) binds to endogenous Tumor Protein P73 at the amino acid region 291-340.
Immunogen Sequence	



Western blot analysis of JK cells using Acetyl-p73 (K327) Polyclonal Antibody. Secondary antibody was diluted at 1:20000



Western blot analysis of lysate from Jurkat cells, using p73 (Acetyl-Lys327) Antibody.



Western blot analysis of Jurkat cells using Acetyl-p73 (K327) Polyclonal Antibody. Secondary antibody was diluted at 1:20000

This product is suitable for in-vitro studies under the RESEARCH USE ONLY [RUO] licence. This product must not be used as for diagnostic or other medical purposes.
St John's Laboratory Ltd, Knowledge Dock Business Centre, University Way, London, E16 2RD | Tel: 0208 223 3081