

Anti-Acetyl-TP73-Lys321 antibody (281-330) (STJ90152)

STJ90152

GENERAL INFORMATION

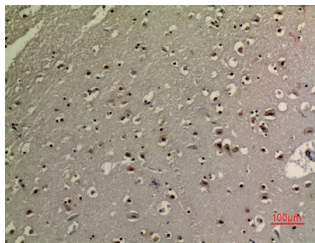
Product Type	Primary antibodies
Short Description	Rabbit polyclonal antibody anti-Acetyl-Tumor Protein P73-Lys321 (281-330) is suitable for use in Western Blot, Immunohistochemistry, Immunofluorescence and ELISA research applications.
Applications	WB, IHC-P, IF-P, ELISA
Host/Source	Rabbit
Reactivity	Human, Rat, Mouse

PRODUCT PROPERTIES

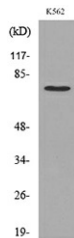
Clonality	Polyclonal
Clone ID	
Concentration	1 mg/mL
Conjugation	Unconjugated
Purification	The antibody was affinity-purified from rabbit anti-serum by affinity-chromatography.
Dilution Range	WB 1:500-1:2000 IHC 1:100-300 ELISA 1:20000
Formulation	PBS, 50% Glycerol, 0.5% BSA and 0.02% Sodium Azide.
Isotype	IgG
Storage Instruction	Store at -20°C for up to 1 year from the date of receipt, and avoid repeat freeze-thaw cycles.

TARGET INFORMATION

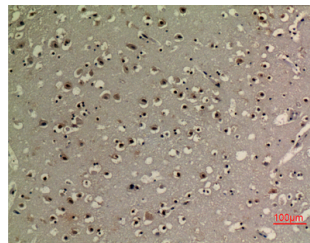
Gene ID	7161
Gene Symbol	TP73
Uniprot ID	P73_HUMAN
Immunogen	The antiserum was produced against synthesized Acetyl-peptide derived from human p73 around the Acetylation site of Lys321 at amino acid range 281-330
Immunogen Region	281-330
Specificity	Acetyl-TP73-Lys321 polyclonal antibody (Tumor Protein P73) binds to endogenous Tumor Protein P73 at the amino acid region 281-330.
Immunogen Sequence	



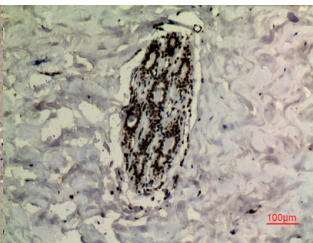
Immunohistochemical analysis of paraffin-embedded human brain, antibody was diluted at 1:100



Western blot analysis of lysate from K562 cells, using p73 (Acetyl-Lys321) Antibody.



Immunohistochemical analysis of paraffin-embedded human brain, antibody was diluted at 1:100



Immunohistochemical analysis of paraffin-embedded human breast, antibody was diluted at 1:100

This product is suitable for in-vitro studies under the RESEARCH USE ONLY [RUO] licence. This product must not be used as for diagnostic or other medical purposes.
St John's Laboratory Ltd, Knowledge Dock Business Centre, University Way, London, E16 2RD | Tel: 0208 223 3081