

Anti-Acetyl-E2F4-Lys96 antibody (61-110) (STJ90140)

STJ90140

GENERAL INFORMATION

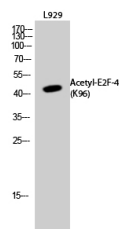
Product Type	Primary antibodies
Short Description	Rabbit polyclonal antibody anti-Acetyl-Transcription Factor E2f4-Lys96 (61-110) is suitable for use in Western Blot and ELISA research applications.
Applications	WB, ELISA
Host/Source	Rabbit
Reactivity	Human, Mouse, Rat

PRODUCT PROPERTIES

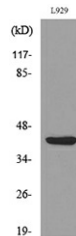
Clonality	Polyclonal
Clone ID	
Concentration	1 mg/mL
Conjugation	Unconjugated
Purification	The antibody was affinity-purified from rabbit anti-serum by affinity-chromatography.
Dilution Range	WB 1:500-1:2000 ELISA 1:20000
Formulation	PBS, 50% Glycerol, 0.5% BSA and 0.02% Sodium Azide.
Isotype	IgG
Storage	Store at -20°C for up to 1 year from the date of receipt, and avoid repeat freeze-thaw cycles.
Instruction	

TARGET INFORMATION

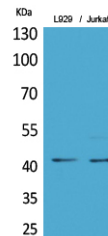
Gene ID	1874
Gene Symbol	E2F4
Uniprot ID	E2F4_HUMAN
Immunogen	The antiserum was produced against synthesized Acetyl-peptide derived from human E2F4 around the Acetylation site of Lys96 at amino acid range 61-110
Immunogen Region	61-110
Specificity	Acetyl-E2F4-Lys96 polyclonal antibody (Transcription Factor E2f4) binds to endogenous Transcription Factor E2f4 at the amino acid region 61-110.
Immunogen Sequence	



Western blot analysis of L929 cells using Acetyl-E2F4 (K96) Polyclonal Antibody. Secondary antibody was diluted at 1:20000



Western blot analysis of lysate from L929 cells, using E2F4 (Acetyl-Lys96) Antibody.



Western blot analysis of L929, Jurkat cells using Acetyl-E2F4 (K96) Polyclonal Antibody. Secondary antibody was diluted at 1:20000

This product is suitable for in-vitro studies under the RESEARCH USE ONLY [RUO] licence. This product must not be used as for diagnostic or other medical purposes.
St John's Laboratory Ltd, Knowledge Dock Business Centre, University Way, London, E16 2RD | Tel: 0208 223 3081