

Anti-Acetyl-ATF5-Lys29 antibody (1-50) (STJ90139)

STJ90139

GENERAL INFORMATION

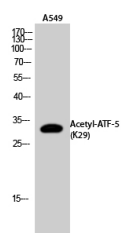
Product Type	Primary antibodies
Short Description	Rabbit polyclonal antibody anti-Acetyl-Cyclic Amp-Dependent Transcription Factor Atf-5-Lys29 (1-50) is suitable for use in Western Blot and ELISA research applications.
Applications	WB, ELISA
Host/Source	Rabbit
Reactivity	Human, Mouse, Rat

PRODUCT PROPERTIES

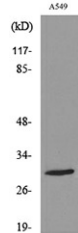
Clonality	Polyclonal
Clone ID	
Concentration	1 mg/mL
Conjugation	Unconjugated
Purification	The antibody was affinity-purified from rabbit anti-serum by affinity-chromatography.
Dilution Range	WB 1:500-1:2000 ELISA 1:20000
Formulation	PBS, 50% Glycerol, 0.5% BSA and 0.02% Sodium Azide.
Isotype	IgG
Storage Instruction	Store at -20°C for up to 1 year from the date of receipt, and avoid repeat freeze-thaw cycles.

TARGET INFORMATION

Gene ID	22809
Gene Symbol	ATF5
Uniprot ID	ATF5_HUMAN
Immunogen	The antiserum was produced against synthesized Acetyl-peptide derived from human ATF5 around the Acetylation site of Lys29 at amino acid range 1-50
Immunogen Region	1-50
Specificity	Acetyl-ATF5-Lys29 polyclonal antibody (Cyclic Amp-Dependent Transcription Factor Atf-5) binds to endogenous Cyclic Amp-Dependent Transcription Factor Atf-5 at the amino acid region 1-50.
Immunogen Sequence	



Western blot analysis of A549 cells using Acetyl-ATF-5 (K29) Polyclonal Antibody. Secondary antibody was diluted at 1:20000



Western blot analysis of lysate from A549 cells, using ATF5 (Acetyl-Lys29) Antibody.



Western blot analysis of A549 cells using Acetyl-ATF-5 (K29) Polyclonal Antibody. Secondary antibody was diluted at 1:20000

This product is suitable for in-vitro studies under the RESEARCH USE ONLY [RUO] licence. This product must not be used as for diagnostic or other medical purposes.
St John's Laboratory Ltd, Knowledge Dock Business Centre, University Way, London, E16 2RD | Tel: 0208 223 3081