

Anti-Acetyl-RELA-Lys310 antibody (250-330) (STJ90133)

STJ90133

GENERAL INFORMATION

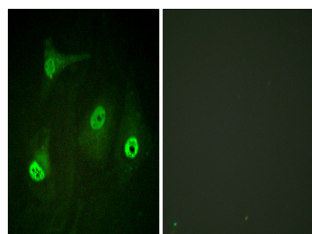
Product Type	Primary antibodies
Short Description	Rabbit polyclonal antibody anti-Acetyl-Transcription Factor P65-Lys310 (250-330) is suitable for use in Western Blot, Immunohistochemistry, Immunofluorescence, Immunocytochemistry and ELISA research applications.
Applications	WB, IHC-P, IF, ICC, ELISA
Host/Source	Rabbit
Reactivity	Human, Mouse

PRODUCT PROPERTIES

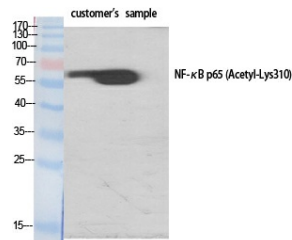
Clonality	Polyclonal
Clone ID	
Concentration	1 mg/mL
Conjugation	Unconjugated
Purification	The antibody was affinity-purified from rabbit anti-serum by affinity-chromatography.
Dilution	WB 1:500-2000
Range	IHC-P 1:50-300 IF 1:50-300
Formulation	PBS, 50% Glycerol, 0.5% BSA and 0.02% Sodium Azide.
Isotype	IgG
Storage Instruction	Store at -20°C for up to 1 year from the date of receipt, and avoid repeat freeze-thaw cycles.

TARGET INFORMATION

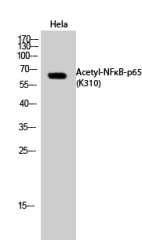
Gene ID	5970
Gene Symbol	RELA
Uniprot ID	TF65_HUMAN
Immunogen	The antiserum was produced against synthesized peptide derived from human NF-kappaB p65 around the acetylated site of Lys310 at amino acid range 275-324
Immunogen Region	250-330
Specificity	Acetyl-RELA-Lys310 polyclonal antibody (Transcription Factor P65) binds to endogenous Transcription Factor P65 at the amino acid region 250-330.
Immunogen Sequence	



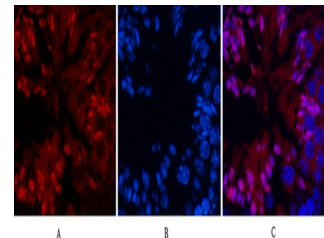
Immunofluorescence analysis of HeLa cells, using NF-kappaB p65 (Acetyl-Lys310) Antibody. The picture on the right is blocked with the synthesized peptide.



Western blot analysis of various cells using Acetyl-NF Kappa B-p65 (K310) Polyclonal Antibody diluted at 1:1000. Secondary antibody was diluted at 1:20000



Western blot analysis of HeLa cells using Acetyl-NF Kappa B-p65 (K310) Polyclonal Antibody diluted at 1:1000. Secondary antibody was diluted at 1:20000



Immunofluorescence analysis of Mouse-testis tissue. 1. NF Kappa B-p65 (Acetyl Lys310) Polyclonal Antibody (red) was diluted at 1:200 (4°C, overnight). 2. Cy3 labeled Secondary antibody was diluted at 1:300 (room temperature, 50min). 3. Picture B: DAPI (blue) 10min. Picture A: Target. Picture B: DAPI. Picture C: merge of A+B

This product is suitable for in-vitro studies under the RESEARCH USE ONLY [RUO] licence. This product must not be used as for diagnostic or other medical purposes.

St John's Laboratory Ltd, Knowledge Dock Business Centre, University Way, London, E16 2RD | Tel: 0208 223 3081