

## Anti-Acetyl-TP53-K386 antibody (320-400) (STJ90132)

STJ90132

### GENERAL INFORMATION

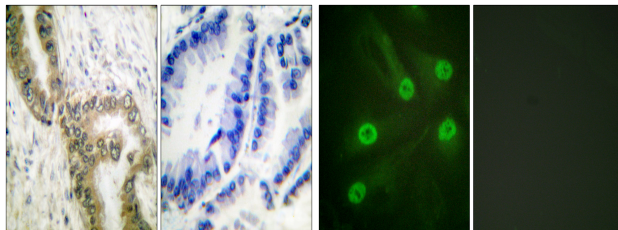
<b>Product Type</b>	Primary antibodies
<b>Short Description</b>	Rabbit polyclonal antibody anti-Acetyl-Cellular Tumor antigen P53-K386 (320-400) is suitable for use in Immunohistochemistry, Immunofluorescence, Immunocytochemistry, Western Blot and ELISA research applications.
<b>Applications</b>	IHC-P, IF, ICC, WB, ELISA
<b>Host/Source</b>	Rabbit
<b>Reactivity</b>	Human, Rat, Mouse

### PRODUCT PROPERTIES

<b>Clonality</b>	Polyclonal
<b>Clone ID</b>	
<b>Concentration</b>	1 mg/mL
<b>Conjugation</b>	Unconjugated
<b>Purification</b>	The antibody was affinity-purified from rabbit anti-serum by affinity-chromatography.
<b>Dilution</b>	WB 1:500-2000
<b>Range</b>	IHC 1:100-1:300 IF 1:200-1:1000 ELISA 1:40000
<b>Formulation</b>	PBS, 50% Glycerol, 0.5% BSA and 0.02% Sodium Azide.
<b>Isotype</b>	IgG
<b>Storage Instruction</b>	Store at -20°C for up to 1 year from the date of receipt, and avoid repeat freeze-thaw cycles.

### TARGET INFORMATION

<b>Gene ID</b>	7157
<b>Gene Symbol</b>	TP53
<b>Uniprot ID</b>	P53_HUMAN
<b>Immunogen</b>	The antiserum was produced against synthesized peptide derived from human p53 around the acetylated site of Lys386 at amino acid range 344-393
<b>Immunogen Region</b>	320-400
<b>Specificity</b>	Acetyl-TP53-K386 polyclonal antibody (Cellular Tumor Antigen P53) binds to endogenous Cellular Tumor Antigen P53 at the amino acid region 320-400.
<b>Immunogen Sequence</b>	



Immunohistochemistry analysis of paraffin-embedded human lung carcinoma tissue, using p53 (Acetyl-Lys386) Antibody. The picture on the right is blocked with the synthesized peptide.

Immunofluorescence analysis of HeLa cells, using p53 (Acetyl-Lys386) Antibody. The picture on the right is blocked with the synthesized peptide.

This product is suitable for in-vitro studies under the RESEARCH USE ONLY [RUO] licence. This product must not be used as for diagnostic or other medical purposes.  
St John's Laboratory Ltd, Knowledge Dock Business Centre, University Way, London, E16 2RD | Tel: 0208 223 3081