

Anti-Acetyl-Histone H3-Lys18 antibody (1-80) (STJ90123)

STJ90123

GENERAL INFORMATION

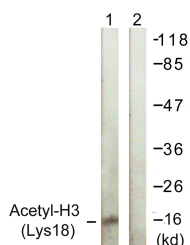
Product Type	Primary antibodies
Short Description	Rabbit polyclonal antibody anti-Acetyl-Histone H3.1/Histone H3.2/Histone H3.3-Lys18 (1-80) is suitable for use in Western Blot, Immunohistochemistry, Immunofluorescence, Immunocytochemistry and ELISA research applications.
Applications	WB, IHC-P, IF, ICC, ELISA
Host/Source	Rabbit
Reactivity	Human, Mouse, Rat

PRODUCT PROPERTIES

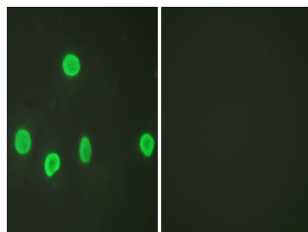
Clonality	Polyclonal
Clone ID	
Concentration	1 mg/mL
Conjugation	Unconjugated
Purification	The antibody was affinity-purified from rabbit anti-serum by affinity-chromatography.
Dilution Range	WB 1:500-1:2000 IHC 1:100-1:300 IF 1:200-1:1000 ELISA 1:5000
Formulation	PBS, 50% Glycerol, 0.5% BSA and 0.02% Sodium Azide.
Isotype	IgG
Storage Instruction	Store at -20°C for up to 1 year from the date of receipt, and avoid repeat freeze-thaw cycles.

TARGET INFORMATION

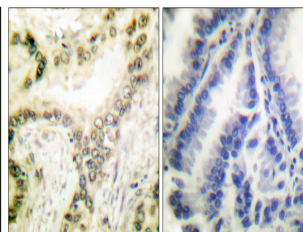
Gene ID	8350/8351/8352/8353/8354/8355/8356/8357/8358/8968 3020/3021
Gene Symbol	H3C1.H3C2.H3C3.H3C4.H3C6.H3C7.H3C8.H3C10.H3C11.H3C12 H31_HUMAN H33_HUMAN H32_HUMAN
Immunogen	The antiserum was produced against synthesized peptide derived from human Histone H3 around the acetylated site of Lys18 at amino acid range 1-50
Immunogen Region	1-80
Specificity	Acetyl-Histone H3-Lys18 polyclonal antibody (Histone H3.1 and Histone H3.2 and Histone H3.3) binds to endogenous Histone H3.1 and Histone H3.2 and Histone H3.3 at the amino acid region 1-80.
Immunogen Sequence	



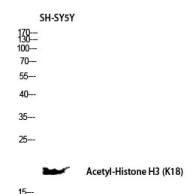
Western blot analysis of lysates from HeLa cells, treated with TSA 400nM 24h, using Histone H3 (Acetyl-Lys18) Antibody. The lane on the right is blocked with the synthesized peptide.



Immunofluorescence analysis of HeLa cells, using Histone H3 (Acetyl-Lys18) Antibody. The picture on the right is blocked with the synthesized peptide.



Immunohistochemistry analysis of paraffin-embedded human lung carcinoma tissue, using Histone H3 (Acetyl-Lys18) Antibody. The picture on the right is blocked with the synthesized peptide.



Western blot analysis of SH-SY5Y lysis using Acetyl-Histone H3 (K18) antibody. Antibody was diluted at 1:1000. Secondary antibody was diluted at 1:20000

This product is suitable for in-vitro studies under the RESEARCH USE ONLY [RUO] licence. This product must not be used as for diagnostic or other medical purposes.

St John's Laboratory Ltd, Knowledge Dock Business Centre, University Way, London, E16 2RD | Tel: 0208 223 3081