

## Anti-Acetyl-H1-8-K25 antibody (100-180) (STJ90116)

STJ90116

### GENERAL INFORMATION

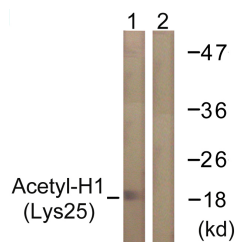
<b>Product Type</b>	Primary antibodies
<b>Short Description</b>	Rabbit polyclonal antibody anti-Acetyl-Histone H1.8-K25 (100-180) is suitable for use in Western Blot, Immunohistochemistry, Immunofluorescence and ELISA research applications.
<b>Applications</b>	WB, IHC-P, IF-P, ELISA
<b>Host/Source</b>	Rabbit
<b>Reactivity</b>	Human, Monkey

### PRODUCT PROPERTIES

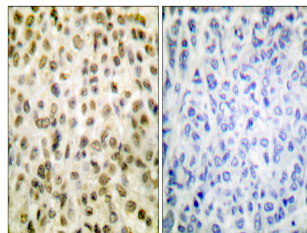
<b>Clonality</b>	Polyclonal
<b>Clone ID</b>	
<b>Concentration</b>	1 mg/mL
<b>Conjugation</b>	Unconjugated
<b>Purification</b>	The antibody was affinity-purified from rabbit anti-serum by affinity-chromatography.
<b>Dilution Range</b>	WB 1:500-1:2000 IHC 1:100-1:300 ELISA 1:20000
<b>Formulation</b>	PBS, 50% Glycerol, 0.5% BSA and 0.02% Sodium Azide.
<b>Isotype</b>	IgG
<b>Storage Instruction</b>	Store at -20°C for up to 1 year from the date of receipt, and avoid repeat freeze-thaw cycles.

### TARGET INFORMATION

<b>Gene ID</b>	132243
<b>Gene Symbol</b>	H1-8
<b>Uniprot ID</b>	H18_HUMAN
<b>Immunogen</b>	The antiserum was produced against synthesized peptide derived from human Histone H1 around the acetylated site of Lys25 at amino acid range 131-180
<b>Immunogen Region</b>	100-180
<b>Specificity</b>	Acetyl-H1-8-K25 polyclonal antibody (Histone H1.8) binds to endogenous Histone H1.8 at the amino acid region 100-180.
<b>Immunogen Sequence</b>	



Western blot analysis of lysates from COS7 cells, treated with TSA 400nM 24h, using Histone H1 (Acetyl-Lys25) Antibody. The lane on the right is blocked with the synthesized peptide.



Immunohistochemistry analysis of paraffin-embedded human breast carcinoma tissue, using Histone H1 (Acetyl-Lys25) Antibody. The picture on the right is blocked with the synthesized peptide.