

Anti-Mono-Methyl-RELA-Lys314/Lys315 antibody (STJ90114)

STJ90114

GENERAL INFORMATION

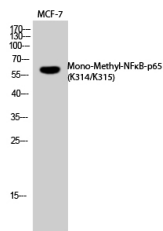
Product Type	Primary antibodies
Short Description	Rabbit polyclonal antibody anti-Mono-Methyl-Transcription Factor P65-Lys314/Lys315 is suitable for use in Western Blot and ELISA research applications.
Applications	WB, ELISA
Host/Source	Rabbit
Reactivity	Human, Mouse, Rat

PRODUCT PROPERTIES

Clonality	Polyclonal
Clone ID	
Concentration	1 mg/mL
Conjugation	Unconjugated
Purification	The antibody was affinity-purified from rabbit anti-serum by affinity-chromatography.
Dilution Range	WB 1:500-1:2000 ELISA 1:20000
Formulation	PBS, 50% Glycerol, 0.5% BSA and 0.02% Sodium Azide.
Isotype	IgG
Storage	Store at -20°C for up to 1 year from the date of receipt, and avoid repeat freeze-thaw cycles.
Instruction	

TARGET INFORMATION

Gene ID	5970
Gene Symbol	RELA
Uniprot ID	TF65_HUMAN
Immunogen	Synthesized peptide derived from human p65 around the mono-methylation site of K314/K315.
Immunogen Region	
Specificity	Mono-Methyl-RELA-Lys314/Lys315 polyclonal antibody (Transcription Factor P65) binds to endogenous Transcription Factor P65.
Immunogen Sequence	



Western blot analysis of MCF7 cells using Mono-Methyl-NF-Kappa-B-p65 (K314/K315) Polyclonal Antibody. Secondary antibody was diluted at 1:20000