

Anti-Mono-Methyl-Histone H3-Lys80 antibody (STJ90113)

STJ90113

GENERAL INFORMATION

| | |
|--------------------------|---|
| Product Type | Primary antibodies |
| Short Description | Rabbit polyclonal antibody anti-Mono-Methyl-Histone H3.1/Histone H3.2/Histone H3.3/Histone H3.3C-Lys80 is suitable for use in Western Blot and ELISA research applications. |
| Applications | WB, ELISA |
| Host/Source | Rabbit |
| Reactivity | Human, Mouse, Rat |

PRODUCT PROPERTIES

| | |
|----------------------------|--|
| Clonality | Polyclonal |
| Clone ID | |
| Concentration | 1 mg/mL |
| Conjugation | Unconjugated |
| Purification | The antibody was affinity-purified from rabbit anti-serum by affinity-chromatography. |
| Dilution | WB 1:500-1:2000 |
| Range | ELISA 1:20000 |
| Formulation | PBS, 50% Glycerol, 0.5% BSA and 0.02% Sodium Azide. |
| Isotype | IgG |
| Storage Instruction | Store at -20°C for up to 1 year from the date of receipt, and avoid repeat freeze-thaw cycles. |

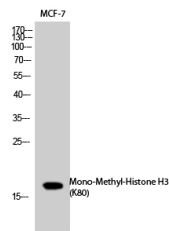
TARGET INFORMATION

Gene ID [440093](#)
[3020/3021](#)
[H3-5](#)
[H3-3A,H3-3B](#)
[H3C_HUMAN](#)
[H33_HUMAN](#)
[H31_HUMAN](#)

Immunogen Region Synthesized peptide derived from human Histone H3 around the mono-methylation site of K80.

Specificity Mono-Methyl-Histone H3-Lys80 polyclonal antibody (Histone H3.1 and Histone H3.2 and Histone H3.3 and Histone H3.3C) binds to endogenous Histone H3.1 and Histone H3.2 and Histone H3.3 and Histone H3.3C.

Immunogen Sequence



Western blot analysis of MCF-7 cells using Mono-Methyl-Histone H3 (K80) Polyclonal Antibody. Secondary antibody was diluted at 1:20000

This product is suitable for in-vitro studies under the RESEARCH USE ONLY [RUO] licence. This product must not be used as for diagnostic or other medical purposes.
 St John's Laboratory Ltd, Knowledge Dock Business Centre, University Way, London, E16 2RD | Tel: 0208 223 3081