

Anti-Di-Methyl-Histone H3-Lys5 antibody (STJ90112)

STJ90112

GENERAL INFORMATION

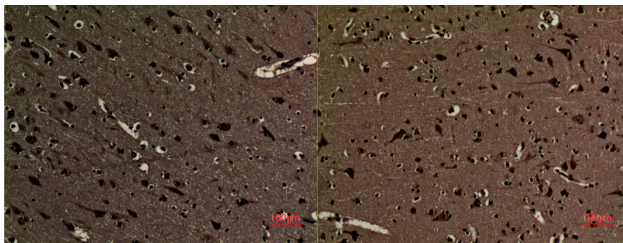
| | |
|--------------------------|--|
| Product Type | Primary antibodies |
| Short Description | Rabbit polyclonal antibody anti-Di-Methyl-Histone H3.1/Histone H3.2/Histone H3.3/Histone H3.3C-Lys5 is suitable for use in Western Blot, Immunohistochemistry, Immunofluorescence and ELISA research applications. |
| Applications | WB, IHC-P, IF-P, ELISA |
| Host/Source | Rabbit |
| Reactivity | Human, Mouse, Rat |

PRODUCT PROPERTIES

| | |
|----------------------------|--|
| Clonality | Polyclonal |
| Clone ID | |
| Concentration | 1 mg/mL |
| Conjugation | Unconjugated |
| Purification | The antibody was affinity-purified from rabbit anti-serum by affinity-chromatography. |
| Dilution Range | WB 1:500-1:2000 IHC 1:100-300 ELISA 1:20000 |
| Formulation | PBS, 50% Glycerol, 0.5% BSA and 0.02% Sodium Azide. |
| Isotype | IgG |
| Storage Instruction | Store at -20°C for up to 1 year from the date of receipt, and avoid repeat freeze-thaw cycles. |

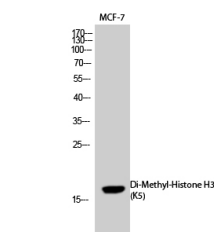
TARGET INFORMATION

| | |
|---------------------------|--|
| Gene ID | 8350/8351/8352/8353/8354/8355/8356/8357/8358/8968 3020/3021 |
| Gene Symbol | H3C1.H3C2.H3C3.H3C4.H3C6.H3C7.H3C8.H3C10.H3C11.H3C12 H31_HUMAN H33_HUMAN H32_HUMAN |
| Immunogen Region | Synthesized peptide derived from human Histone H3 around the di-methylation site of K5. |
| Specificity | Di-Methyl-Histone H3-Lys5 polyclonal antibody (Histone H3.1 and Histone H3.2 and Histone H3.3 and Histone H3.3C) binds to endogenous Histone H3.1 and Histone H3.2 and Histone H3.3 and Histone H3.3C. |
| Immunogen Sequence | |



Immunohistochemical analysis of paraffin-embedded human-brain, antibody was diluted at 1:100

Immunohistochemical analysis of paraffin-embedded human-brain, antibody was diluted at 1:100



Western blot analysis of MCF-7 cells using Di-Methyl-Histone H3 (K5) Polyclonal Antibody. Secondary antibody was diluted at 1:20000

This product is suitable for in-vitro studies under the RESEARCH USE ONLY [RUO] licence. This product must not be used as for diagnostic or other medical purposes.
St John's Laboratory Ltd, Knowledge Dock Business Centre, University Way, London, E16 2RD | Tel: 0208 223 3081