

Anti-Mono-Methyl-Histone H3-Lys37 antibody (STJ90110)

STJ90110

GENERAL INFORMATION

Product Type	Primary antibodies
Short Description	Rabbit polyclonal antibody anti-Mono-Methyl-Histone H3.1/Histone H3.2/Histone H3.3/Histone H3.3C-Lys37 is suitable for use in Western Blot, Immunohistochemistry, Immunofluorescence and ELISA research applications.
Applications	WB, IHC-P, IF-P, ELISA
Host/Source	Rabbit
Reactivity	Human, Mouse, Rat

PRODUCT PROPERTIES

Clonality	Polyclonal
Clone ID	
Concentration	1 mg/mL
Conjugation	Unconjugated
Purification	The antibody was affinity-purified from rabbit anti-serum by affinity-chromatography.
Dilution Range	WB 1:500-1:2000 IHC 1:100-300 ELISA 1:20000
Formulation	PBS, 50% Glycerol, 0.5% BSA and 0.02% Sodium Azide.
Isotype	IgG
Storage Instruction	Store at -20°C for up to 1 year from the date of receipt, and avoid repeat freeze-thaw cycles.

TARGET INFORMATION

Gene ID [440093](#)
[3020/3021](#)
[H3-5](#)
[H3-3A,H3-3B](#)
[H3C_HUMAN](#)
[H33_HUMAN](#)
[H31_HUMAN](#)

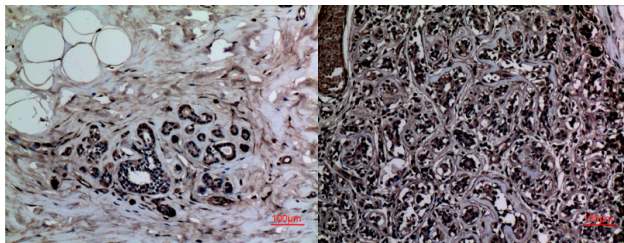
Immunogen Synthesized peptide derived from human Histone H3 around the mono-methylation site of K37.

Immunogen Region

Specificity

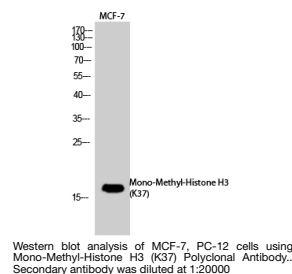
Mono-Methyl-Histone H3-Lys37 polyclonal antibody (Histone H3.1 and Histone H3.2 and Histone H3.3 and Histone H3.3C) binds to endogenous Histone H3.1 and Histone H3.2 and Histone H3.3 and Histone H3.3C.

Immunogen Sequence



Immunohistochemical analysis of paraffin-embedded human-breast, antibody was diluted at 1:100

Immunohistochemical analysis of paraffin-embedded human-breast, antibody was diluted at 1:100



This product is suitable for in-vitro studies under the RESEARCH USE ONLY [RUO] licence. This product must not be used as for diagnostic or other medical purposes.
 St John's Laboratory Ltd, Knowledge Dock Business Centre, University Way, London, E16 2RD | Tel: 0208 223 3081