

Anti-Mono-Methyl-Histone H3-Lys10 antibody (STJ90109)

STJ90109

GENERAL INFORMATION

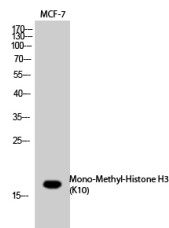
Product Type	Primary antibodies
Short Description	Rabbit polyclonal antibody anti-Mono-Methyl-Histone H3.1/Histone H3.2/Histone H3.3/Histone H3.3C-Lys10 is suitable for use in Western Blot and ELISA research applications.
Applications	WB, ELISA
Host/Source	Rabbit
Reactivity	Human, Mouse, Rat

PRODUCT PROPERTIES

Clonality	Polyclonal
Clone ID	
Concentration	1 mg/mL
Conjugation	Unconjugated
Purification	The antibody was affinity-purified from rabbit anti-serum by affinity-chromatography.
Dilution	WB 1:500-1:2000
Range	ELISA 1:20000
Formulation	PBS, 50% Glycerol, 0.5% BSA and 0.02% Sodium Azide.
Isotype	IgG
Storage	Store at -20°C for up to 1 year from the date of receipt, and avoid repeat freeze-thaw cycles.
Instruction	

TARGET INFORMATION

Gene ID	8350/8351/8352/8353/8354/8355/8356/8357/8358/8968 440093
Gene Symbol	H3C1.H3C2.H3C3.H3C4.H3C6.H3C7.H3C8.H3C10.H3C11.H3C12 H31_HUMAN H3C_HUMAN H33_HUMAN
Immunogen	Synthesized peptide derived from human Histone H3 around the mono-methylation site of K10.
Immunogen Region	
Specificity	Mono-Methyl-Histone H3-Lys10 polyclonal antibody (Histone H3.1 and Histone H3.2 and Histone H3.3 and Histone H3.3C) binds to endogenous Histone H3.1 and Histone H3.2 and Histone H3.3 and Histone H3.3C.
Immunogen Sequence	



Western blot analysis of MCF7 cells using Mono-Methyl-Histone H3 (K10) Polyclonal Antibody. Secondary antibody was diluted at 1:20000

This product is suitable for in-vitro studies under the RESEARCH USE ONLY [RUO] licence. This product must not be used as for diagnostic or other medical purposes.
St John's Laboratory Ltd, Knowledge Dock Business Centre, University Way, London, E16 2RD | Tel: 0208 223 3081