

## Anti-Cleaved-F2R-S42 antibody (40-120 N-Term) (STJ90103)

STJ90103

### GENERAL INFORMATION

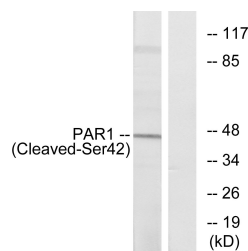
<b>Product Type</b>	Primary antibodies
<b>Short Description</b>	Rabbit polyclonal antibody anti-Cleaved-Proteinase-Activated Receptor 1-S42 (40-120 N-Term) is suitable for use in Western Blot and ELISA research applications.
<b>Applications</b>	WB, ELISA
<b>Host/Source</b>	Rabbit
<b>Reactivity</b>	Human, Rat, Mouse

### PRODUCT PROPERTIES

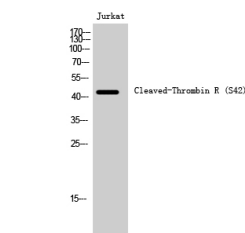
<b>Clonality</b>	Polyclonal
<b>Clone ID</b>	
<b>Concentration</b>	1 mg/mL
<b>Conjugation</b>	Unconjugated
<b>Purification</b>	The antibody was affinity-purified from rabbit anti-serum by affinity-chromatography.
<b>Dilution Range</b>	WB 1:500-1:2000 ELISA 1:20000
<b>Formulation</b>	PBS, 50% Glycerol, 0.5% BSA and 0.02% Sodium Azide.
<b>Isotype</b>	IgG
<b>Storage Instruction</b>	Store at -20°C for up to 1 year from the date of receipt, and avoid repeat freeze-thaw cycles.

### TARGET INFORMATION

<b>Gene ID</b>	2149
<b>Gene Symbol</b>	F2R
<b>Uniprot ID</b>	PAR1_HUMAN
<b>Immunogen</b>	The antiserum was produced against synthesized peptide derived from human PAR1 at amino acid range 23-72
<b>Immunogen Region</b>	40-120 N-Term
<b>Specificity</b>	Cleaved-F2R-S42 polyclonal antibody (Proteinase-Activated Receptor 1) binds to endogenous Proteinase-Activated Receptor 1 at the amino acid region 40-120 N-Term.
<b>Immunogen Sequence</b>	



Western blot analysis of lysates from Jurkat cells, using PAR1 (Cleaved-Ser42) Antibody. The lane on the right is blocked with the synthesized peptide.



Western blot analysis of Jurkat cells using Cleaved-Thrombin R (S42) Polyclonal Antibody

This product is suitable for in-vitro studies under the RESEARCH USE ONLY [RUO] licence. This product must not be used as for diagnostic or other medical purposes.  
St John's Laboratory Ltd, Knowledge Dock Business Centre, University Way, London, E16 2RD | Tel: 0208 223 3081