

Anti-Cleaved-PLG-V98 antibody (50-130 N-Term) (STJ90102)

STJ90102

GENERAL INFORMATION

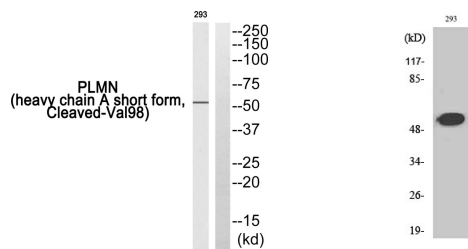
Product Type	Primary antibodies
Short Description	Rabbit polyclonal antibody anti-Cleaved-Plasminogen Cleaved Into-Plasmin Heavy Chain A-Activation Peptide-Angiostatin-Plasmin Heavy Chain A-Short Form-Plasmin Light Chain B-V98 (50-130 N-Term) is suitable for use in Western Blot and ELISA research ap
Applications	WB, ELISA
Host/Source	Rabbit
Reactivity	Human, Mouse, Rat

PRODUCT PROPERTIES

Clonality	Polyclonal
Clone ID	
Concentration	1 mg/mL
Conjugation	Unconjugated
Purification	The antibody was affinity-purified from rabbit anti-serum by affinity-chromatography.
Dilution	WB 1:500-1:2000
Range	ELISA 1:10000
Formulation	PBS, 50% Glycerol, 0.5% BSA and 0.02% Sodium Azide.
Isotype	IgG
Storage	Store at -20°C for up to 1 year from the date of receipt, and avoid repeat freeze-thaw cycles.
Instruction	

TARGET INFORMATION

Gene ID	5340
Gene Symbol	PLG
Uniprot ID	PLMN_HUMAN
Immunogen	The antiserum was produced against synthesized peptide derived from human PLMN at amino acid range 79-128
Immunogen Region	50-130 N-Term
Specificity	Cleaved-PLG-V98 polyclonal antibody (Plasminogen Cleaved Into-Plasmin Heavy Chain A-Activation Peptide-Angiostatin-Plasmin Heavy Chain A-Short Form-Plasmin Light Chain B) binds to endogenous Plasminogen Cleaved Into-Plasmin Heavy Chain A-Activation P
Immunogen Sequence	



Western blot analysis of PLMN (heavy chain A short form, Cleaved-Val98) Antibody. The lane on the right is blocked with the PLMN (heavy chain A short form, Cleaved-Val98) peptide.

Western blot analysis of various cells using Cleaved-Plasminogen HC A short form (V98) Polyclonal Antibody

This product is suitable for in-vitro studies under the RESEARCH USE ONLY [RUO] licence. This product must not be used as for diagnostic or other medical purposes.
 St John's Laboratory Ltd, Knowledge Dock Business Centre, University Way, London, E16 2RD | Tel: 0208 223 3081