

Anti-Cleaved-KLKB1-R390 antibody (310-390 Internal) (STJ90101)

STJ90101

GENERAL INFORMATION

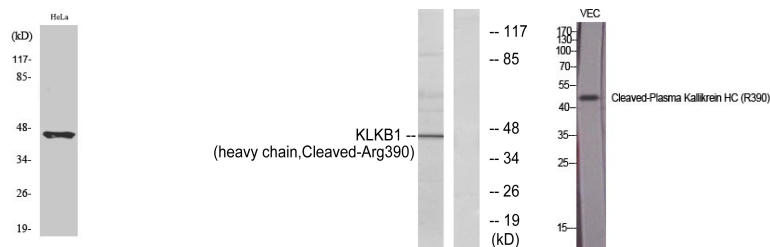
Product Type	Primary antibodies
Short Description	Rabbit polyclonal antibody anti-Cleaved-Plasma Kallikrein-R390 (310-390 Internal) is suitable for use in Western Blot, Immunohistochemistry, Immunofluorescence and ELISA research applications.
Applications	WB, IHC-P, IF-P, ELISA
Host/Source	Rabbit
Reactivity	Human, Rat, Mouse

PRODUCT PROPERTIES

Clonality	Polyclonal
Clone ID	
Concentration	1 mg/mL
Conjugation	Unconjugated
Purification	The antibody was affinity-purified from rabbit anti-serum by affinity-chromatography.
Dilution Range	WB 1:500-1:2000 IHC 1:100-1:300 ELISA 1:10000
Formulation	PBS, 50% Glycerol, 0.5% BSA and 0.02% Sodium Azide.
Isotype	IgG
Storage Instruction	Store at -20°C for up to 1 year from the date of receipt, and avoid repeat freeze-thaw cycles.

TARGET INFORMATION

Gene ID	3818
Gene Symbol	KLKB1
Uniprot ID	KLKB1_HUMAN
Immunogen	The antiserum was produced against synthesized peptide derived from human KLKB1 at amino acid range 341-390
Immunogen Region	310-390 Internal
Specificity	Cleaved-KLKB1-R390 polyclonal antibody (Plasma Kallikrein) binds to endogenous Plasma Kallikrein at the amino acid region 310-390 Internal.
Immunogen Sequence	



Western blot analysis of HeLa cells using Cleaved-Plasma Kallikrein HC (R390) Polyclonal Antibody diluted at 1: 1000

Western blot analysis of lysates from HeLa cells, using KLKB1 (heavy chain, Cleaved-Arg390) Antibody. The lane on the right is blocked with the synthesized peptide.

Western blot analysis of various cells using Cleaved-Plasma Kallikrein HC (R390) Polyclonal Antibody diluted at 1: 1000

This product is suitable for in-vitro studies under the RESEARCH USE ONLY [RUO] licence. This product must not be used as for diagnostic or other medical purposes.
St John's Laboratory Ltd, Knowledge Dock Business Centre, University Way, London, E16 2RD | Tel: 0208 223 3081