

Anti-Cleaved-ITIH2-D702 antibody (630-710 Internal) (STJ90093)

STJ90093

GENERAL INFORMATION

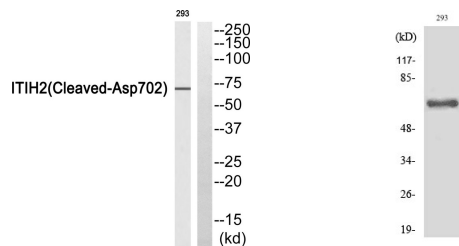
Product Type	Primary antibodies
Short Description	Rabbit polyclonal antibody anti-Cleaved-Inter-Alpha-Trypsin Inhibitor Heavy Chain H2-D702 (630-710 Internal) is suitable for use in Western Blot and ELISA research applications.
Applications	WB, ELISA
Host/Source	Rabbit
Reactivity	Human, Rat, Mouse

PRODUCT PROPERTIES

Clonality	Polyclonal
Clone ID	
Concentration	1 mg/mL
Conjugation	Unconjugated
Purification	The antibody was affinity-purified from rabbit anti-serum by affinity-chromatography.
Dilution	WB 1:500-1:2000
Range	ELISA 1:10000
Formulation	PBS, 50% Glycerol, 0.5% BSA and 0.02% Sodium Azide.
Isotype	IgG
Storage	Store at -20°C for up to 1 year from the date of receipt, and avoid repeat freeze-thaw cycles.
Instruction	

TARGET INFORMATION

Gene ID	3698
Gene Symbol	ITIH2
Uniprot ID	ITIH2_HUMAN
Immunogen	The antiserum was produced against synthesized peptide derived from human ITIH2 at amino acid range 653-702
Immunogen Region	630-710 Internal
Specificity	Cleaved-ITIH2-D702 polyclonal antibody (Inter-Alpha-Trypsin Inhibitor Heavy Chain H2) binds to endogenous Inter-Alpha-Trypsin Inhibitor Heavy Chain H2 at the amino acid region 630-710 Internal.
Immunogen Sequence	



Western blot analysis of ITIH2 (Cleaved-Asp702) Antibody. The lane on the right is blocked with the ITIH2 (Cleaved-Asp702) peptide.

Western blot analysis of various cells using Cleaved-ITIH2 (D702) Polyclonal Antibody

This product is suitable for in-vitro studies under the RESEARCH USE ONLY [RUO] licence. This product must not be used as for diagnostic or other medical purposes.
 St John's Laboratory Ltd, Knowledge Dock Business Centre, University Way, London, E16 2RD | Tel: 0208 223 3081