

Anti-Cleaved-ITIH1-D672 antibody (600-680 Internal) (STJ90092)

STJ90092

GENERAL INFORMATION

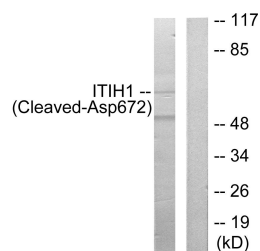
Product Type	Primary antibodies
Short Description	Rabbit polyclonal antibody anti-Cleaved-Inter-Alpha-Trypsin Inhibitor Heavy Chain H1-D672 (600-680 Internal) is suitable for use in Western Blot and ELISA research applications.
Applications	WB, ELISA
Host/Source	Rabbit
Reactivity	Human, Mouse

PRODUCT PROPERTIES

Clonality	Polyclonal
Clone ID	
Concentration	1 mg/mL
Conjugation	Unconjugated
Purification	The antibody was affinity-purified from rabbit anti-serum by affinity-chromatography.
Dilution	WB 1:500-1:2000
Range	ELISA 1:20000
Formulation	PBS, 50% Glycerol, 0.5% BSA and 0.02% Sodium Azide.
Isotype	IgG
Storage	Store at -20°C for up to 1 year from the date of receipt, and avoid repeat freeze-thaw cycles.
Instruction	

TARGET INFORMATION

Gene ID	3697
Gene Symbol	ITIH1
Uniprot ID	ITIH1_HUMAN
Immunogen	The antiserum was produced against synthesized peptide derived from human ITIH1 at amino acid range 623-672
Immunogen Region	600-680 Internal
Specificity	Cleaved-ITIH1-D672 polyclonal antibody (Inter-Alpha-Trypsin Inhibitor Heavy Chain H1) binds to endogenous Inter-Alpha-Trypsin Inhibitor Heavy Chain H1 at the amino acid region 600-680 Internal.
Immunogen Sequence	



Western blot analysis of lysates from Jurkat cells, treated with etoposide 25uM 24h, using ITIH1 (Cleaved-Asp672) Antibody. The lane on the right is blocked with the synthesized peptide.