

## Anti-Cleaved-ITGA5-E895 antibody (850-930 C-Term) (STJ90088)

STJ90088

### GENERAL INFORMATION

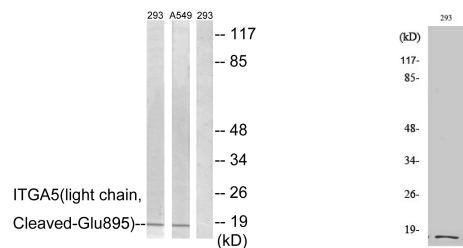
<b>Product Type</b>	Primary antibodies
<b>Short Description</b>	Rabbit polyclonal antibody anti-Cleaved-Integrin Alpha-5-E895 (850-930 C-Term) is suitable for use in Western Blot and ELISA research applications.
<b>Applications</b>	WB, ELISA
<b>Host/Source</b>	Rabbit
<b>Reactivity</b>	Human, Rat, Mouse

### PRODUCT PROPERTIES

<b>Clonality</b>	Polyclonal
<b>Clone ID</b>	
<b>Concentration</b>	1 mg/mL
<b>Conjugation</b>	Unconjugated
<b>Purification</b>	The antibody was affinity-purified from rabbit anti-serum by affinity-chromatography.
<b>Dilution Range</b>	WB 1:500-1:2000 ELISA 1:20000
<b>Formulation</b>	PBS, 50% Glycerol, 0.5% BSA and 0.02% Sodium Azide.
<b>Isotype</b>	IgG
<b>Storage</b>	Store at -20°C for up to 1 year from the date of receipt, and avoid repeat freeze-thaw cycles.
<b>Instruction</b>	

### TARGET INFORMATION

<b>Gene ID</b>	<a href="#">3678</a>
<b>Gene Symbol</b>	<a href="#">ITGA5</a>
<b>Uniprot ID</b>	<a href="#">ITA5_HUMAN</a>
<b>Immunogen</b>	The antiserum was produced against synthesized peptide derived from human ITGA5 at amino acid range 876-925
<b>Immunogen Region</b>	850-930 C-Term
<b>Specificity</b>	Cleaved-ITGA5-E895 polyclonal antibody (Integrin Alpha-5) binds to endogenous Integrin Alpha-5 at the amino acid region 850-930 C-Term.
<b>Immunogen Sequence</b>	



Western blot analysis of lysates from 293 and A549 cells, treated with etoposide 25uM 1h, using ITGA5 (light chain, Cleaved-Glu895) Antibody. The lane on the right is blocked with the synthesized peptide.

Western blot analysis of various cells using Cleaved-Integrin Alpha 5 LC (E895) Polyclonal Antibody