

Anti-Cleaved-F10-I235 antibody (190-270 Internal) (STJ90082)

STJ90082

GENERAL INFORMATION

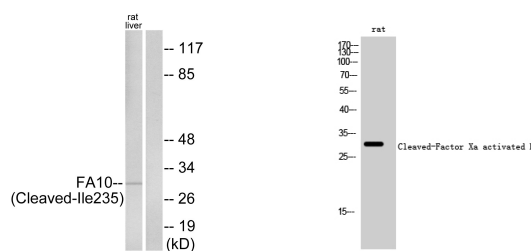
Product Type	Primary antibodies
Short Description	Rabbit polyclonal antibody anti-Cleaved-Coagulation Factor X-I235 (190-270 Internal) is suitable for use in Western Blot and ELISA research applications.
Applications	WB, ELISA
Host/Source	Rabbit
Reactivity	Human, Mouse, Rat

PRODUCT PROPERTIES

Clonality	Polyclonal
Clone ID	
Concentration	1 mg/mL
Conjugation	Unconjugated
Purification	The antibody was affinity-purified from rabbit anti-serum by affinity-chromatography.
Dilution Range	WB 1:500-1:2000 ELISA 1:20000
Formulation	PBS, 50% Glycerol, 0.5% BSA and 0.02% Sodium Azide.
Isotype	IgG
Storage	Store at -20°C for up to 1 year from the date of receipt, and avoid repeat freeze-thaw cycles.
Instruction	

TARGET INFORMATION

Gene ID	2159
Gene Symbol	F10
Uniprot ID	FA10_HUMAN
Immunogen	The antiserum was produced against synthesized peptide derived from human FA10 at amino acid range 216-265
Immunogen Region	190-270 Internal
Specificity	Cleaved-F10-I235 polyclonal antibody (Coagulation Factor X) binds to endogenous Coagulation Factor X at the amino acid region 190-270 Internal.
Immunogen Sequence	



Western blot analysis of lysates from rat liver cells, using FA10 (activated heavy chain, Cleaved-Ile235) Antibody. The lane on the right is blocked with the synthesized peptide.

Western blot analysis of rat cells using Cleaved-Factor Xa activated HC (I235) Polyclonal Antibody

This product is suitable for in-vitro studies under the RESEARCH USE ONLY [RUO] licence. This product must not be used as for diagnostic or other medical purposes.

St John's Laboratory Ltd, Knowledge Dock Business Centre, University Way, London, E16 2RD | Tel: 0208 223 3081