

Anti-Cleaved-F7-R212 antibody (140-220 Internal) (STJ90080)

STJ90080

GENERAL INFORMATION

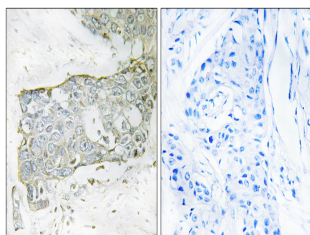
Product Type	Primary antibodies
Short Description	Rabbit polyclonal antibody anti-Cleaved-Coagulation Factor VII-R212 (140-220 Internal) is suitable for use in Western Blot, Immunohistochemistry, Immunofluorescence and ELISA research applications.
Applications	WB, IHC-P, IF-P, ELISA
Host/Source	Rabbit
Reactivity	Human, Rat, Mouse

PRODUCT PROPERTIES

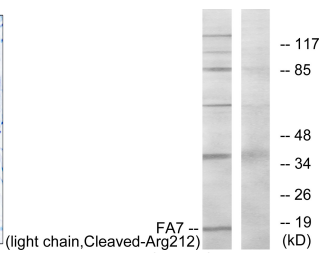
Clonality	Polyclonal
Clone ID	
Concentration	1 mg/mL
Conjugation	Unconjugated
Purification	The antibody was affinity-purified from rabbit anti-serum by affinity-chromatography.
Dilution Range	WB 1:500-1:2000 IHC 1:100-1:300 ELISA 1:20000
Formulation	PBS, 50% Glycerol, 0.5% BSA and 0.02% Sodium Azide.
Isotype	IgG
Storage Instruction	Store at -20°C for up to 1 year from the date of receipt, and avoid repeat freeze-thaw cycles.

TARGET INFORMATION

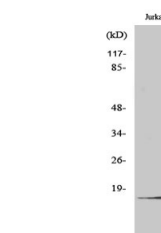
Gene ID	2155
Gene Symbol	F7
Uniprot ID	FA7_HUMAN
Immunogen	The antiserum was produced against synthesized peptide derived from human FA7 at amino acid range 171-220
Immunogen Region	140-220 Internal
Specificity	Cleaved-F7-R212 polyclonal antibody (Coagulation Factor VII) binds to endogenous Coagulation Factor VII at the amino acid region 140-220 Internal.
Immunogen Sequence	



Immunohistochemistry analysis of paraffin-embedded human breast carcinoma tissue, using FA7 (light chain, Cleaved-Arg212) Antibody. The picture on the right is blocked with the synthesized peptide.



Western blot analysis of lysates from Jurkat cells, treated with eto 25uM 24h, using FA7 (light chain, Cleaved-Arg212) Antibody. The lane on the right is blocked with the synthesized peptide.



Western blot analysis of various cells using Cleaved-Factor VII LC (R212) Polyclonal Antibody